



## *User Guide*

---

# ***Beckhoff CTNet I/O***

---

## Remote I/O for CTNet

Part Number: 0485-0019-03  
Issue: 3

## General Information

The manufacturer accepts no liability for any consequences resulting from inappropriate, negligent or incorrect installation or adjustment of the optional operating parameters of the equipment or from mismatching the variable speed drive with the motor.

The contents of this guide are believed to be correct at the time of printing. In the interests of a commitment to a policy of continuous development and improvement, *Control Techniques* reserves the right to change the specification of the product or its performance or the contents of this guide without notice.

All rights reserved. No parts of this guide may be reproduced or transmitted in any form or by any means, electrical or mechanical including photocopying, recording or by an information storage or retrieval system, without permission in writing from the publisher.

---

# Contents



---

<b>1</b>	<b>Safety Information .....</b>	<b>5</b>
1.1	Warnings, cautions and notes .....	5
1.2	Electrical safety - general warning .....	5
1.3	System design and safety of personnel .....	5
1.4	Compliance with regulations .....	6
1.5	Adjusting parameters .....	6
<b>2</b>	<b>Introduction .....</b>	<b>7</b>
2.1	Remote I/O for CTNet .....	7
2.2	BK7200 bus coupler .....	7
2.3	BK7200 bus coupler features .....	8
2.4	Hardware description .....	8
2.5	BK7200 product specifications .....	9
<b>3</b>	<b>Electrical Installation .....</b>	<b>10</b>
3.1	BK7200 main power supply requirements .....	10
3.2	Power supply to the power connections .....	10
3.3	CTNet connection .....	11
3.4	Configuration interface .....	11
3.5	K-bus contacts .....	11
3.6	Supply isolation .....	11
<b>4</b>	<b>CTNet Installation .....</b>	<b>12</b>
4.1	BK7200 bus coupler .....	12
4.2	CTNet cable .....	12
4.3	Cable specification .....	13
4.4	Cable screen .....	13
4.5	Network termination .....	13
4.6	Network limitations .....	14
<b>5</b>	<b>Getting Started .....</b>	<b>15</b>
5.1	Network node address .....	15
5.2	Network data rate .....	16
5.3	DIP switch example .....	16
5.4	Synchronisation message .....	17
5.5	Network initialisation .....	17
5.6	Network loss .....	17
5.7	Network interruptions .....	17
5.8	Beckhoff coupler programming cable .....	17
<b>6</b>	<b>Terminal Configuration .....</b>	<b>18</b>
6.1	BK7200 bus coupler .....	18
6.2	Digital input terminals .....	19
6.3	Digital output terminals .....	22
6.4	Analogue input terminals .....	24
6.5	Analogue output terminals .....	26
6.6	Special function input terminals .....	27
6.7	Special function output terminals .....	27
6.8	Large terminals .....	28
6.9	Example configuration 1 .....	29
6.10	Example configuration 2 .....	30

<b>7</b>	<b>Cyclic Data .....</b>	<b>32</b>
7.1	Fast and slow cyclic data channels .....	32
7.2	Cyclic/Non-cyclic data - time allocations .....	32
7.3	Overloading network nodes .....	33
7.4	Asynchronous sampling .....	34
7.5	Setting up the BK7200 for cyclic communications .....	35
<b>8</b>	<b>Non-cyclic Data .....</b>	<b>40</b>
<b>9</b>	<b>Diagnostics .....</b>	<b>41</b>
9.1	Beckhoff BK7200 bus coupler firmware version .....	41
9.2	Diagnostic LEDs .....	42
9.3	Error codes and their meanings .....	42
9.4	Location of error .....	44
9.5	Cannot establish CTNet connection .....	44
<b>10</b>	<b>KS2000 Configuration Tool .....</b>	<b>45</b>
10.1	KS2000 introduction .....	45
10.2	KS2000 features .....	45
10.3	Purchasing KS2000 .....	47
<b>11</b>	<b>Menu 0 .....</b>	<b>48</b>
11.1	Menu 0 parameters .....	48
11.2	Watchdog .....	51
11.3	Unsupported terminal .....	52
11.4	2-byte PLC interface .....	53
<b>12</b>	<b>Glossary Of Terms .....</b>	<b>54</b>
	<b>Index .....</b>	<b>56</b>

# 1 Safety Information

## 1.1 Warnings, cautions and notes

	A <b>Warning</b> contains information, which is essential for avoiding a safety hazard.
	A <b>Caution</b> contains information, which is necessary for avoiding a risk of damage to the product or other equipment.

**NOTE** A **Note** contains information, which helps to ensure correct operation of the product.

## 1.2 Electrical safety - general warning

The voltages used in the drive can cause severe electrical shock and/or burns, and could be lethal. Extreme care is necessary at all times when working with or adjacent to the drive.

Specific warnings are given at the relevant places in this User Guide.

## 1.3 System design and safety of personnel

The BK7200 is intended as a component for professional incorporation into complete equipment or a system. If installed incorrectly, the BK7200 may present a safety hazard.

Drives use high voltages and currents, carry a high level of stored electrical energy, and are used to control equipment which can cause injury.

Close attention is required to the electrical installation and the system design to avoid hazards, either in normal operation or in the event of equipment malfunction. System design, installation, commissioning and maintenance must be carried out by personnel who have the necessary training and experience. They must read this safety information and this User Guide carefully.

The STOP and SECURE DISABLE functions of the drive do not isolate dangerous voltages from the output of the drive or from any external option unit. The supply must be disconnected by an approved electrical isolation device before gaining access to the electrical connections.

**With the sole exception of the SECURE DISABLE function, none of the drive functions must be used to ensure safety of personnel, i.e. they must not be used for safety-related functions.**

The SECURE DISABLE function is only available as standard on the Unidrive SP.

Careful consideration must be given to the functions of the drive which might result in a hazard, either through their intended behaviour or through incorrect operation due to a fault. In any application where a malfunction of the drive or its control system could lead to or allow damage, loss or injury, a risk analysis must be carried out, and where necessary, further measures taken to reduce the risk - for example, an over-speed protection device in case of failure of the speed control, or a fail-safe mechanical brake in case of loss of motor braking.

The SECURE DISABLE function and secure input on Unidrive SP meet the requirements of EN954-1 category 3 for the prevention of unexpected starting of the drive. They may be used in a safety-related application. **The system designer is responsible for ensuring that the complete system is safe and designed correctly according to the relevant safety standards.**

**NOTE** Consideration must be given to the potential of communications loss and the safe state of outputs.

## 1.4 Compliance with regulations

The installer is responsible for complying with all relevant regulations, such as national wiring regulations, accident prevention regulations and electromagnetic compatibility (EMC) regulations. Particular attention must be given to the cross-sectional areas of conductors, the selection of fuses or other protection, and protective earth (ground) connections.

Within the European Union, all machinery in which this product is used must comply with the following directives:

98/37/EC: Safety of machinery.

89/336/EEC: Electromagnetic Compatibility.

## 1.5 Adjusting parameters

Some parameters have a profound effect on the operation of the system. They must not be altered without careful consideration of the impact on the controlled system.

Measures must be taken to prevent unwanted changes due to error or tampering.

## 2 Introduction

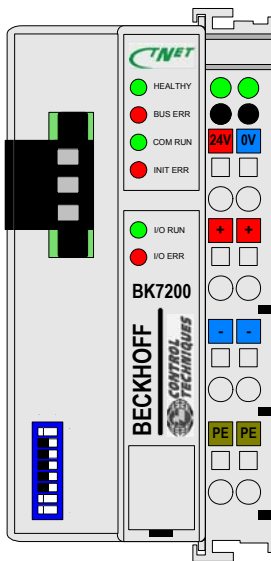
**NOTE** This manual was created in conjunction with BK7200 firmware version 01.04.00, this version contains many more features than any previous versions and is built for use on CTNet Revision D BK7200 devices only. For the use of CTNet Revision A/B BK7200 devices please refer to the Beckhoff CTNet I/O User guide, Issue 1.

### 2.1 Remote I/O for CTNet

The BK7200 provides an interface that allows the Beckhoff modular I/O system to be connected to CTNet networks. The interface is called a “bus coupler” and allows combinations of input and output terminals to be connected to it. It mounts directly onto standard DIN railing.

The BK7200 CTNet Bus Coupler module is the interface between CTNet and the Beckhoff serial K-bus and acts as a buffer for information transfer between the two bus systems. A range of digital and analogue I/O terminals are supported by the CTNet Bus Coupler (see Chapter 6 *Terminal Configuration* on page 18 for more information).

### 2.2 BK7200 bus coupler



The most important piece of hardware required to create an I/O point on CTNet is the BK7200 CTNet bus coupler. This module connects directly to the CTNet network and appears on the network as another node. The data rate is selectable from 5.0 Mbits/sec down to 625 Kbits/sec and is configured (along with the node address) using the DIP switches. The BK7200 supports both fast and slow cyclic data and non-cyclic data commands. Although the BK7200 can respond to non-cyclic read and write commands issued by other nodes on the network, it cannot initiate non-cyclic commands (as it does not support DPL). SyPT Lite or SyPT Pro is required to configure cyclic data links within the BK7200 module.

Terminals are addressed using the same menu and parameter structure (#MM.PP) as Control Techniques drives. Each terminal is assigned to a menu according to the type of terminal it is, with the parameter number determined by the physical position of the terminal with respect to other similar terminals. This allows additional terminals to be connected at a later date without affecting the existing terminal configuration.

Digital inputs and outputs are addressed in blocks of 16 bits. This provides an efficient method of transferring digital input and output information around the system without taking up large amounts of the available network bandwidth.

## 2.3 BK7200 bus coupler features

- Up to 64 bus terminals
- Decentralised I/O
- Power input terminals for separately powered groups

## 2.4 Hardware description

Figure 2.1 shows an example BK7200 bus coupler configuration and its respective hardware features:

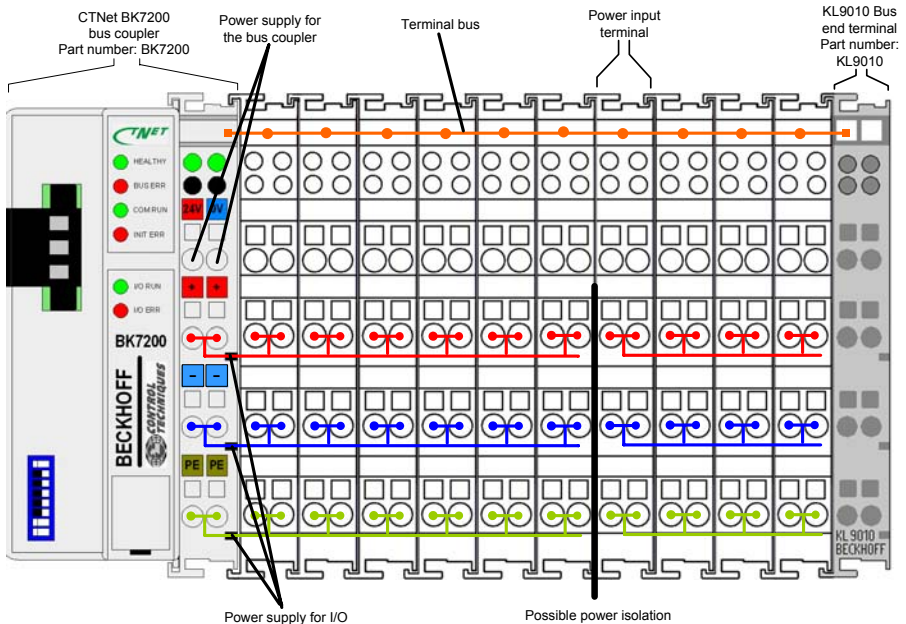


Figure 2-1 The principle of the bus terminal

- *CTNet bus coupler BK7200*  
This is the Beckhoff bus coupler which allows you to connect from the Beckhoff I/O terminals onto a CTNet network.
- *Power supply for the bus coupler*  
These two contacts provide the +24V and 0V power supply contacts which provide power to the BK7200 bus coupler.
- *Terminal bus*  
This is essentially what connects the terminals together to form a means of data transmission from terminal to terminal (internal and not visible).
- *Power input terminal*  
Some analogue input terminals provide the option of inserting an external power supply (this is useful when some terminals on the K-bus require either a higher or lower amount of power than is currently provided along the power contacts).



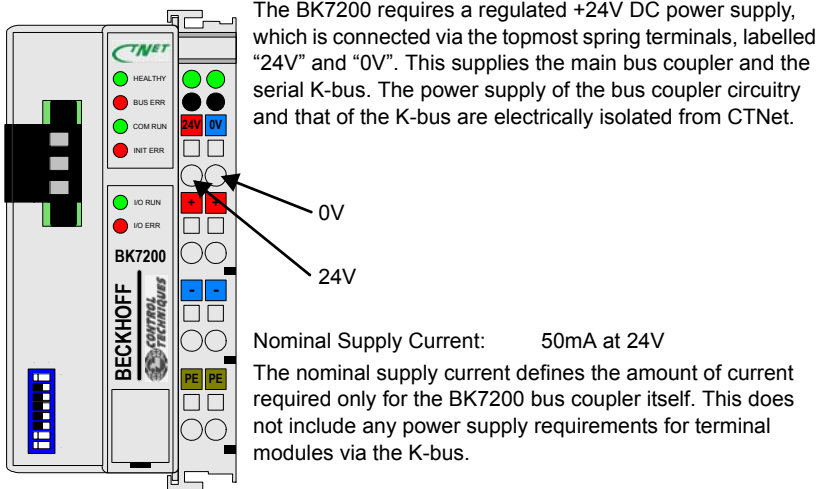
- Bus end terminal**  
 The last terminal of the terminal bus must be a bus end terminal to terminate the data flow, an example bus end terminal is a KL9010.
- Power supply for I/O**  
 These 3 contacts are the '+', '-' and the 'Potential Earth' and provide the power and earthing to the terminals connected to the bus coupler.
- Possible power isolation**  
 On the left-hand side of most of the Beckhoff I/O terminals are two metal contacts. These contacts interlock with the preceding terminals power contacts which provides the terminal with power. Some terminals do not have these 2 contacts, these terminals allow the option of providing an additional power supply to them.

## 2.5 BK7200 product specifications

Number of bus terminals:	64
Digital peripheral signals:	Max 256 inputs/outputs
Analogue peripheral signals:	Max 100 inputs/outputs
Special peripheral signals:	Max 100 inputs/outputs
Baud Rate:	625k, 1.25 MBit/s, 2.5 MBit/s, 5 MBit/s
Node range:	1 - 64
Bus connection:	1 x 3-pin screw terminal
Voltage supply:	24V DC
Weight:	Approx 100g

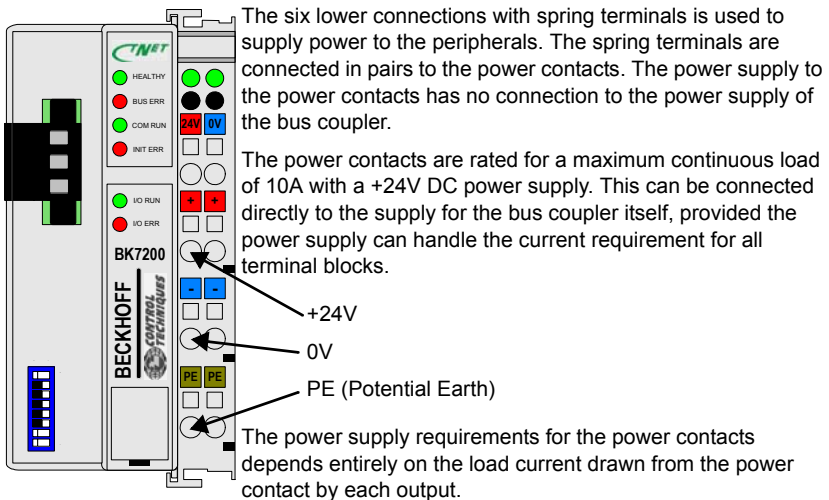
## 3 Electrical Installation

### 3.1 BK7200 main power supply requirements



The current consumption from the K-bus is specified in the Beckhoff data sheets for each terminal module. Once the required configuration of terminals is known, the total current requirements for the bus coupler and K-bus can be calculated.

### 3.2 Power supply to the power connections



**NOTE** It is recommended that two separate supplies are used to prevent excessive I/O noise reaching the bus coupler power supply terminals.

### 3.3 CTNet connection

On the left hand side of the BK7200 bus coupler there is a flat recessed area from which you can plug in a 3-way CTNet connector, this is used to connect the device to a CTNet network (see section 2.1 *Remote I/O for CTNet* on page 7).

### 3.4 Configuration interface

On the lower left hand side of the BK7200s front face there is a 4-way connector slot underneath a rectangular flap. This is an RS232 interface which allows for the connection of the coupler directly to a PC, this can be used to update the firmware, configure the terminal with KS2000, etc. You could also access the functionality of the configuration interface via the fieldbus by means of the 2-byte PLC interface communications function.

### 3.5 K-bus contacts

All connections between the bus coupler and the bus terminals are made via gold contacts located on the right hand side of the bus coupler. When the Beckhoff terminals are slotted into each other, these gold contacts create a connection to the connected bus terminals. The K-bus is the component which is responsible for the power supply to the electronic components in the bus terminals and also the data exchanges occurring between the bus terminals, part of this exchange occurs within a ring structure of the K-bus. If a terminal is disconnected from the K-bus the circuit will be broken and no data can be exchanged.

### 3.6 Supply isolation

The bus coupler operates with three internal independant supplies. The input power supply provides power to the electrically isolated K-bus control circuits in the bus coupler and also the K-bus itself. The power supply is also used to generate the operating voltages for CTNet. All bus terminals are electrically isolated from the K-bus, so that the K-bus is fully isolated electrically.

# 4     CNet Installation

## 4.1     BK7200 bus coupler

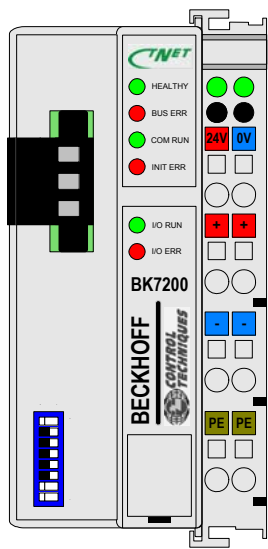


Figure 4-1 Beckhoff BK7200 bus coupler

The BK7200 CNet coupler (as shown in Figure 4-1 *Beckhoff BK7200 bus coupler* ) has a single CNet connector, with the pin out connections as shown in Figure 4-1 *Beckhoff BK7200 bus coupler* and should be connected as shown in Figure 4-3 *CNet network connections* on page 13.

## 4.2     CNet cable

Table 4.1 CNet cable pinouts (Revision D)

Function	CNet pins	Description
A	1	Positive data line
Shield	2	Cable screen
B	3	Negative data line

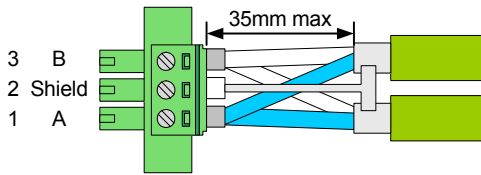
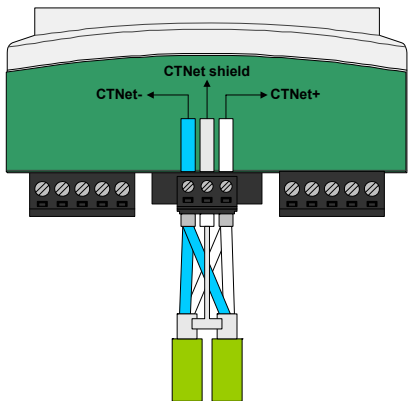


Figure 4-2 CNet cable pinouts



**Figure 4-3 CTNet network connections**

### 4.3 Cable specification

For maximum noise immunity, special CTNet cable must be used.

**Table 4.2 CTNet cable part numbers**

Part Number	Description
4500-0098	100m CTNet cable
4500-0099	200m CTNet cable

Table 4.2 *CTNet cable part numbers* shows the part numbers for the relevant CTNet cable which is available from your local Control Techniques Drive Centre, it is strongly recommended that this cable is used in all CTNet installations.

**NOTE** Support will not be provided when non-approved CTNet cable is used.

### 4.4 Cable screen

The screen of the cable at every node on the network **MUST** be connected to the screen terminal (pin 2) on the CTNet terminal block (see Figure 4-3 *CTNet network connections* ). When the screen is stripped back to connect the twisted pair to the CTNet terminals, keep the exposed section of the cable as short as possible.

### 4.5 Network termination

The network **MUST** be fitted with terminating resistors at the end of each segment. If resistors are not fitted, the network may appear to work OK, but the noise immunity of the network will be drastically reduced. The terminating resistor value should match the nominal characteristic impedance value for the cable; in the case of the customised CTNet cable, the terminating resistors used should be  $82\Omega \pm 1\%$  0.25W.

# 4.6 Network limitations

The BK7200 CTNet bus coupler is capable of driving a maximum of 20 nodes over a maximum network cable length of 44m at 5.0 Mbits/sec. If the network data rate is reduced to 2.5 Mbits/sec, the maximum network length is increased to 100m, but the limit of 20 nodes remains the same.

Table 4.3 CTNet segment specifications

Data rate (Mbit/s)	Total cable length (m)			
	5 nodes	10 nodes	15 nodes	20 nodes
5.0	140	100	75	44
2.5	250	200	150	100
1.25	340	275	200	135

**NOTE** For more information regarding CTNet segment specifications please refer to the CTNet user guide.

**NOTE** Cable grounding: The CTNet cable should be bonded to a suitable grounding point (such as the drive grounding bracket at least once per cabinet).

**NOTE** This manual was created in conjunction with BK7200 firmware version 01.04.00, this version contains many more features than any previous versions and is built for use on CTNet Revision D BK7200 devices only. For the use of CTNet Revision A/B BK7200 devices please refer to the Beckhoff CTNet I/O User guide, Issue 1.

# 5 Getting Started

## 5.1 Network node address

The DIP switches on the BK7200 are used to specify the node address and the data rate. These should be set-up as required before the module is powered up.

Each node on the network must have a unique node address assigned. This is set-up using DIP switches 1 to 6 on the BK7200. The range of addresses for the bus coupler is limited from 1 to 64 (as shown in Table 5.1 *Node address look-up table* ).

Table 5.1 Node address look-up table

Node Address	DIP Switch						Node Address	DIP Switch						Node Address	DIP Switch					
	6	5	4	3	2	1		6	5	4	3	2	1		6	5	4	3	2	1
1	0	0	0	0	0	0	23	0	1	0	1	1	0	45	1	0	1	1	0	0
2	0	0	0	0	0	1	24	0	1	0	1	1	1	46	1	0	1	1	0	1
3	0	0	0	0	1	0	25	0	1	1	0	0	0	47	1	0	1	1	1	0
4	0	0	0	0	1	1	26	0	1	1	0	0	1	48	1	0	1	1	1	1
5	0	0	0	1	0	0	27	0	1	1	0	1	0	49	1	1	0	0	0	0
6	0	0	0	1	0	1	28	0	1	1	0	1	1	50	1	1	0	0	0	1
7	0	0	0	1	1	0	29	0	1	1	1	0	0	51	1	1	0	0	1	0
8	0	0	0	1	1	1	30	0	1	1	1	0	1	52	1	1	0	0	1	1
9	0	0	1	0	0	0	31	0	1	1	1	1	0	53	1	1	0	1	0	0
10	0	0	1	0	0	1	32	0	1	1	1	1	1	54	1	1	0	1	0	1
11	0	0	1	0	1	0	33	1	0	0	0	0	0	55	1	1	0	1	1	0
12	0	0	1	0	1	1	34	1	0	0	0	0	1	56	1	1	0	1	1	1
13	0	0	1	1	0	0	35	1	0	0	0	1	0	57	1	1	1	0	0	0
14	0	0	1	1	0	1	36	1	0	0	0	1	1	58	1	1	1	0	0	1
15	0	0	1	1	1	0	37	1	0	0	1	0	0	59	1	1	1	0	1	0
16	0	0	1	1	1	1	38	1	0	0	1	0	1	60	1	1	1	0	1	1
17	0	1	0	0	0	0	39	1	0	0	1	1	0	61	1	1	1	1	0	0
18	0	1	0	0	0	1	40	1	0	0	1	1	1	62	1	1	1	1	0	1
19	0	1	0	0	1	0	41	1	0	1	0	0	0	63	1	1	1	1	1	0
20	0	1	0	0	1	1	42	1	0	1	0	0	1	64	1	1	1	1	1	1
21	0	1	0	1	0	0	43	1	0	1	0	1	0							
22	0	1	0	1	0	1	44	1	0	1	0	1	1							

## 5.2 Network data rate

Each node on the network must be configured to run at the same data rate. This is set using DIP switches 7 and 8 on the BK7200. The data rates available on the BK7200 range from 5.0 Mbits/sec down to 625 Kbits/sec (312.5 Kbits/sec is not supported) as shown in Table 5.2 *Node address look-up table* .

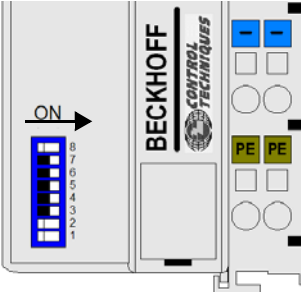


Figure 5-1 DIP switches

As shown in Figure 5-1 the DIP switches allow an easy way to configure both the node address and the data rate of the BK7200 CTNet bus coupler, to turn on one of the DIP switches push it over to the right hand position as shown above.

The maximum data rate that can be supported depends on the total length of cable in the network and the number of nodes connected to the network.

Table 5.2 Node address look-up table

Data Rate (bits/sec)	DIP 7	DIP 8
5.0M	0	0
2.5M	1	0
1.25M	0	1
625K	1	1

## 5.3 DIP switch example

Figure 5-2 below shows dip switches 1, 2, 4 and 8 set to the ON position, from this we can distinguish that because dip switches 1-6 represent the node address, then using Table 5.1 *Node address look-up table* on page 15 we see that the node address of this device is set to 12, and because dip switch 7 is set to the OFF position and dip switch 8 is set to the ON position then using Table 5.2 *Node address look-up table* on page 16 we can see that the data rate of this device is set to 1.25M.

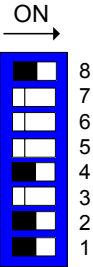


Figure 5-2 DIP switch example



## 5.4 Synchronisation message

The cyclic data synchronisation message cannot be generated by the BK7200. To use cyclic data, this message **MUST** be generated by another node on the network.

## 5.5 Network initialisation

There are several rules that must be satisfied for the network to initialise correctly.

- All nodes must have a unique node address.
- All nodes must have the same data rate setting.
- Only one node must be set to generate the synchronisation message.

## 5.6 Network loss

If the CTNet network connection to a BK7200 node is lost for any reason, this will be indicated by the NET ERR light coming on. The module will automatically re-join the network when the network is re-connected to the bus coupler.

**NOTE** There is also a Watchdog function available, see Chapter 11.2 *Watchdog* on page 51 for more details.

## 5.7 Network interruptions

If power is lost to a BK7200 node, this does not prevent the network from continuing (apart from the missing node), or being re-started without the “dead” node (other nodes may re-configure to ignore the “dead” node).

## 5.8 Beckhoff coupler programming cable

The 4-wire RS232 cable required to program a Beckhoff bus coupler via the KS2000 application is available directly from Beckhoff Automated Systems (<http://www.beckhoff.com> the part number is ‘KS2000-cable’).

---

## 6 Terminal Configuration

---

As the terminal blocks are connected together, each terminal is connected onto the serial K-bus. The BK7200 bus coupler scans the K-bus during initialisation, starting with the terminal block nearest to the bus coupler and checks the ID code. This is repeated for each subsequent terminal connected to the bus. A "database" is built up within the internal memory, which contains a complete image of the status of the input and output terminals. The database acts as a buffer between CTNet and the K-bus, with both systems allowed to read and write data to and from the database.

The database is structured as a two dimensional array, in a similar way to the internal parameter sets of the Unidrive SP. Menu and parameter references are used to address each location within the database.

Each terminal is assigned to a particular pre-defined menu, depending on which type of terminal it is. This means that digital inputs are all grouped together under one menu, the same applies for digital outputs, analogue inputs, analogue outputs, etc.

The parameter reference for each terminal is assigned on a sequential basis. As each new terminal is found, it is assigned the next unused parameter location in the appropriate menu. This process continues to build the database, until all terminals have been assigned to the database (see Table 6.1 *Terminal parameter allocations*, Chapter 6.9 *Example configuration 1* on page 29 and Chapter 6.10 *Example configuration 2* on page 30 for example configurations).

### 6.1 BK7200 bus coupler

Combinations of modules may be connected to the BK7200 module, subject to certain limitations:

1. The maximum limit of 64 terminal blocks is not exceeded.
2. No more than 256 digital input channels are connected to a single CTNet bus coupler.
3. No more than 256 digital output channels are connected to a single CTNet bus coupler.
4. No more than 100 analogue input channels are connected to a single CTNet bus coupler.
5. No more than 100 analogue output channels are connected to a single CTNet bus coupler.
6. No more than 100 special function input channels are connected to a single CTNet bus coupler.
7. No more than 100 special function output channels are connected to a single CTNet bus coupler.

Table 6.1 Terminal parameter allocations

Menu	Description	Colour Code
#1.00 - #1.15	Simple Digital Input	Yellow
#2.00 - #2.15	Simple Digital Output	Red
#3.00 - #3.99	Analogue Input	Green
#4.00 - #4.99	Analogue Output	Blue
#5.00 - #5.99	Special Function Input	Clear
#6.00 - #6.99	Special Function Output	Clear

6.2 Digital input terminals

Digital inputs are assigned to parameters in menu 1. A maximum of 256 digital inputs can be connected to a single bus coupler (see Table 6.2 *Digital input parameter allocations* ). All digital input parameters are read-only. Terminals cannot be addressed individually, but each group of 16 inputs can be read using both cyclic and non-cyclic data commands.

b31	b30	b29	b28	b27	b26	b25	b24	b23	b22	b21	b20	b19	b18	b17	b16
b15	b14	b13	b12	b11	b10	b09	b08	b07	b06	b05	b04	b03	b02	b01	b00
T15	T14	T13	T12	T11	T10	T09	T08	T07	T06	T05	T04	T03	T02	T01	T00

Each parameter contains the data from 16 digital input terminals. CTNet actually transfers data as 32-bit double-words, but the upper 16 bits are not used when reading digital inputs. If there are insufficient terminals to utilise all the bits in a parameter, the other bits will be set to 0.

Table 6.2 Digital input parameter allocations

Reference	I/O Points	Reference	I/O Points
#1.00	T0 - T15	#1.08	T128 - T143
#1.01	T16 - T31	#1.09	T144 - T159
#1.02	T32 - T47	#1.10	T160 - T175
#1.03	T48 - T63	#1.11	T176 - T191
#1.04	T64 - T79	#1.12	T192 - T207
#1.05	T80 - T95	#1.13	T208 - T223
#1.06	T96 - T111	#1.14	T224 - T239
#1.07	T112 - T127	#1.15	T240 - T255

## 6.2.1 Supported terminals

The bus terminal blocks listed in Table 6.3 *Supported digital input terminals* below are all classed as “Digital Input Terminals” and are all assigned to parameters in menu 1.

**NOTE** For the latest list of supported digital input terminals contact your supplier or local Drive Centre.

**Table 6.3 Supported digital input terminals**

Type	Inputs	Outputs	Description
KL1002	2	n/a	2 digital inputs 24v DC, filter 3.0 ms, 4-wire system.
KL1012	2	n/a	2 digital inputs 24v DC, filter 0.2 ms, 4-wire system.
KL1032	2	n/a	2 digital inputs 48v DC, filter 3.0 ms, 4-wire system.
KL1052	2	n/a	2 digital inputs 24v DC, filter 3.0 ms with p/n switching, 4-wire system.
KL1104	4	n/a	4 digital inputs, 24v DC, filter 3.0 ms, 3-wire system.
KL1114	4	n/a	4 digital inputs 24v DC, filter 0.2 ms, 3-wire system.
KL1124	4	n/a	4 digital inputs 5v DC, filter 0.2 ms, 3-wire system.
KL1154	4	n/a	4 digital inputs 24v DC, filter 3.0 ms with p/n switching, 3-wire system.
KL1164	4	n/a	4 digital inputs 24v DC, filter 0.2 ms with p/n switching, 3-wire system.
KL1184	4	n/a	4 digital inputs 24v DC, filter 3.0 ms with n switching, 3-wire system.
KL1194	4	n/a	4 digital inputs 24v DC, filter 0.2 ms with n switching, 3-wire system.
KL1212	2	2	2 digital inputs 24v DC, filter 3.0 ms, 3-wire system, short circuit protected sensor supply.
KL1232	2	n/a	2 Digital Inputs 24V DC, Filter 0.2 ms, 2/3/4-wire system, edge triggered plus expansion.
KL1302	2	n/a	2 Digital Inputs 24V DC, Filter 3.0 ms, 2-wire system, for type 2 sensors.
KL1304	4	n/a	4 Digital Inputs 24V DC, Filter 3.0 ms, 2-wire system, for type 2 sensors.
KL1312	2	n/a	2 Digital Inputs 24V DC, Filter 0.2 ms, 2-wire system, for type 2 sensors.
KL1314	4	n/a	4 Digital Inputs 24V DC, Filter 0.2 ms, 2-wire system, for type 2 sensors.
KL1352	2	n/a	2 Digital Inputs 24V DC, Filter 3.0 ms, 2-wire system, for NAMUR sensors.
KL1362	2	n/a	2 Digital Inputs 24V DC, Filter 3.0 ms, 2-wire system, for break-in alarm.
KL1382	2	n/a	2 Digital Inputs 24V DC, Filter 30.0 ms, 2-wire system, thermistor.
KL1404	4	n/a	4 Digital Inputs 24V DC, Filter 3.0 ms, 4 2-wire system.
KL1408	8	n/a	8 Digital Inputs 24V DC, Filter 3.0 ms with P switching, 2-wire system.
KL1414	4	n/a	4 Digital Inputs 24V DC, Filter 0.2 ms, 4 2-wire system.
KL1418	8	n/a	8 Digital Inputs 24V DC, Filter 0.2 ms with P switching, 2-wire system.
KL1434	4	n/a	4 Digital Inputs 24V DC, Filter 0.2 ms, 4 2-wire system, type 2.
KL1488	8	n/a	8 Digital Inputs 24V DC, Filter 3.0 ms with N switching, 2-wire system.
KL1498	8	n/a	8 Digital Inputs 24V DC, Filter 0.2 ms with N switching, 2-wire system.
KL1702	2	n/a	2 Digital Inputs 120V/230V AC, 4-wire system.
KL1712	2	n/a	2 Digital Inputs 120V AC/DC, 4-wire system.
KL1722	2	n/a	2 Digital Inputs 120V/230V AC, 4-wire system, no power contacts.
KM1002	16	n/a	16 Digital Inputs 24V DC, Filter 3.0 ms, 1/2/3-pin system variants.
KM1004	32	n/a	32 Digital Inputs 24V DC, Filter 3.0 ms, 1/2/3-pin system variants.
KM1008	64	n/a	64 Digital Inputs 24V DC, Filter 3.0 ms, 1/2/3-pin system variants.

Type	Inputs	Outputs	Description
KM1012	16	n/a	16 Digital Inputs 24V DC, Filter 0.2 ms, 1/2/3-pin system variants.
KM1014	32	n/a	32 Digital Inputs 24V DC, Filter 0.2 ms, 1/2/3-pin system variants.
KM1018	64	n/a	64 Digital Inputs 24V DC, Filter 0.2 ms, 1/2/3-pin system variants.

Safety Information
Introduction
Electrical Installation
CTNet Installation
Getting Started
Terminal Configuration
Cyclic Data
Non-cyclic Data
Diagnostics
KS2000 Configuration Tool
Menu 0
Glossary Of Terms
Index

## 6.3 Digital output terminals

Digital outputs are assigned to parameters in menu 2. All digital output parameters are read/write. A maximum of 256 digital outputs can be connected to a single bus coupler (see Table 6.5 *Digital output parameter allocations* ). Terminals cannot be addressed individually, but each group of 16 outputs can be written to or read from using both cyclic and non-cyclic data commands.

<b>b31</b>	<b>b30</b>	<b>b29</b>	<b>b28</b>	<b>b27</b>	<b>b26</b>	<b>b25</b>	<b>b24</b>	<b>b23</b>	<b>b22</b>	<b>b21</b>	<b>b20</b>	<b>b19</b>	<b>b18</b>	<b>b17</b>	<b>b16</b>
M15	M14	M13	M12	M11	M10	M09	M08	M07	M06	M05	M04	M03	M02	M01	M00

<b>b15</b>	<b>b14</b>	<b>b13</b>	<b>b12</b>	<b>b11</b>	<b>b10</b>	<b>b09</b>	<b>b08</b>	<b>b07</b>	<b>b06</b>	<b>b05</b>	<b>b04</b>	<b>b03</b>	<b>b02</b>	<b>b01</b>	<b>b00</b>
T15	T14	T13	T12	T11	T10	T09	T08	T07	T06	T05	T04	T03	T02	T01	T00

Digital outputs are controlled in groups of 16 bits, with the upper 16 bits of the 32-bit double-words acting as “mask bits”. Mask bits determine whether the corresponding data bit is actually written into the database. This allows addressing of the same block of digital outputs and only update certain outputs. If a mask is set to 1, the corresponding data bit will be updated in the database. If a mask bit is set to 0, the corresponding data bit is not updated in the database.

### 6.3.1 Mask bits example

A bit mask extracts the status of certain bits in a binary string. For example if we have the binary string 01111010 and it is required to extract the status of the second and sixth bits counting along from the right hand side, a bit mask such as 00100010 would be needed along with the use of the bitwise ‘AND’ operator, recalling that 1 AND 1 = 1, with 0 otherwise, we would find the status of the second and sixth bits, however if the mask value of bit 2 changed back to 0 the value of output bit 2 would stay at 1, to change the value of the second output bit back to 0, mask bit 2 would need to be set to 1 and output bit 2 would need to be set to 0. The functions of this bit mask are shown in Table 6.4 below.

Table 6.4 Mask bit functions

Mask Value	Data Value	Output
0	0	No change from last value (0 or 1)
0	1	No change from last value (0 or 1)
1	0	0
1	1	1

This could be used in practice if only the values of particular bits are required.

Table 6.5 Digital output parameter allocations

Reference	I/O Points	Reference	I/O Points
#2.00	T0 - T15	#2.08	T128 - T143
#2.01	T16 - T31	#2.09	T144 - T159
#2.02	T32 - T47	#2.10	T160 - T175
#2.03	T48 - T63	#2.11	T176 - T191
#2.04	T64 - T79	#2.12	T192 - T207
#2.05	T80 - T95	#2.13	T208 - T223
#2.06	T96 - T111	#2.14	T224 - T239
#2.07	T112 - T127	#2.15	T240 - T255

### 6.3.2 Supported terminals

The bus terminal blocks listed in Table 6.6 *Supported digital output terminals* below are all classed as “Digital Output Terminals” and are all assigned to parameters in menu 2.

**NOTE** For the latest list of supported digital output terminals either contact your supplier or local Drive Centre.

**Table 6.6 Supported digital output terminals**

Type	Inputs	Outputs	Description
KL2012	n/a	2	2 Digital Outputs 24V DC, 0.5A, 4-wire system.
KL2022	n/a	2	2 Digital Outputs 24V DC, 2.0A, 4-wire system.
KL2032	n/a	2	2 Digital Outputs 24V DC, 0.5A, 4-wire system, reverse polarity protection.
KL2114	n/a	4	4 Digital Outputs 24V DC, 0.5A, 3-wire system.
KL2124	n/a	4	4 Digital Outputs 5V DC, 20mA, 3-wire system.
KL2134	n/a	4	4 Digital Outputs 24V DC, 0.5A, 3-wire system, reverse polarity protection.
KL2184	n/a	4	4 Digital Outputs 24V DC, 0.5A, 3-wire system, with N switching.
KL2212	n/a	2	2 Digital Outputs 24V DC, 0.5A, 4-wire system, with diagnostics.
KL2404	n/a	4	4 Digital Outputs 24V DC, 0.5A, 2-wire system.
KL2408	n/a	8	8 Digital Outputs 24V DC, 0.5A, 2-wire system, with P switching.
KL2424	n/a	4	4 Digital Outputs 24V DC, 2.0A, 2-wire system.
KL2488	n/a	8	8 Digital Outputs 24V DC, 0.5A, 2-wire system, with N switching.
KL2602	n/a	2	2 Relay Outputs 230V AC/30V DC, 5A, make contacts.
KL2612	n/a	2	2 Relay Outputs 125V AC/30V DC, 0.5A AC/2A DC, change-over.
KL2622	n/a	2	2 Relay Outputs 230V AC/30V DC, 5A, make contacts.
KL2631	n/a	2	1 Relay Output 400V AC/300V DC, 2 outputs (1 un-used).
KL2641	2	2	1 Relay Output 230V AC, 16A, with manual operation, 2 inputs(status) 2 outputs(1 un-used).
KL2652	n/a	2	2 Relay Outputs 230V AC/300V DC, 1A, change-over.
KL2702	n/a	2	2 MOSFET Outputs 230V AC/DC, 0.3A.
KL2712	n/a	2	2 Triac Outputs 12-230V AC, 0.5A.
KL2722	n/a	2	2 Triac Outputs 12-230V AC, 0.6mA, mutually locked make contacts.
KL2732	n/a	2	2 Triac Outputs 12-230V AC, 1A, mutually locked make contacts, potential free switches.
KM2002	n/a	16	16 Digital Outputs 24V DC, 0.5A, 1/2/3-pin variants.
KM2004	n/a	32	32 Digital Outputs 24V DC, 0.5A, 1/3-pin variants.
KM2008	n/a	64	64 Digital Outputs 24V DC, 0.5A, 1/3-pin variants.
KM2022	n/a	16	16 Digital Outputs 24V DC, 2.0A, 1/2/3-pin variants.

## 6.4 Analogue input terminals

As seen in Table 6.7 *Analogue input parameter allocations* , analogue inputs are assigned to menu 3. A maximum of 100 analogue inputs can be connected to a single bus coupler. All parameters are read-only.

**Table 6.7 Analogue input parameter allocations**

Reference	I/O Point
#3.00	0
#3.01	1
#3.02	2
#3.xx	xx
#3.98	98
#3.99	99

### 6.4.1 Supported terminals

The bus terminal blocks listed in Table 6.8 *Supported analogue input terminals* are all classed as “Analogue Input Terminals” and are all assigned to parameters in menu 3.

**NOTE** For the latest list of supported analogue input terminals either contact your supplier or local Drive Centre.

**Table 6.8 Supported analogue input terminals**

Type	Inputs	Outputs	Description
KL3001	1	n/a	1 Analogue input, $\pm 10\text{V}$ , 12 bit.
KL3002	2	n/a	2 Analogue inputs, $\pm 10\text{V}$ , 12 bit.
KL3011	1	n/a	1 Analogue input, 0-20mA, 12 bit.
KL3012	2	n/a	2 Analogue inputs, 0-20mA, 12 bit.
KL3021	1	n/a	1 Analogue input, 4-20mA, 12 bit.
KL3022	2	n/a	2 Analogue inputs, 4-20mA, 12 bit.
KL3041	1	n/a	1 Analogue input, 0-20mA, 12 bit, loop-powered.
KL3042	2	n/a	2 Analogue inputs, 0-20mA, 12 bit, loop-powered.
KL3044	4	n/a	4 Analogue inputs, 0-20mA, 12 bit.
KL3051	1	n/a	1 Analogue input, 4-20mA, 12 bit, loop-powered.
KL3052	2	n/a	2 Analogue inputs, 4-20mA, 12 bit, loop-powered.
KL3054	4	n/a	4 Analogue inputs, 4-20mA, 12 bit.
KL3061	1	n/a	1 Analogue input, 0-10V, 12 bit.
KL3062	2	n/a	2 Analogue inputs, 0-10V, 12 bit.
KL3064	4	n/a	4 Analogue inputs, 0-10V, 12 bit.
KL3102	2	n/a	2 Analogue inputs, $\pm 10\text{V}$ , 16 bit.
KL3112	2	n/a	2 Analogue inputs, 0-20mA, 16 bit.
KL3122	2	n/a	2 Analogue inputs, 4-20mA, 15 bit.
KL3132	2	n/a	2 Analogue inputs, $\pm 10\text{V}$ , 16 bit.
KL3142	2	n/a	2 Analogue inputs, 0-20mA, 16 bit.
KL3152	2	n/a	2 Analogue inputs, 4-20mA, 16 bit.
KL3162	2	n/a	2 Analogue inputs, 0-10V, 16 bit.
KL3172	2	n/a	2 Analogue inputs, 0-2V, 16 bit.
KL3182	2	n/a	2 Analogue inputs, $\pm 2\text{V}$ , 16 bit.
KL3201	1	n/a	1 RTD for resistance thermometers, preset PT100.



Type	Inputs	Outputs	Description
KL3202	2	n/a	2 RTD for resistance thermometers, preset PT100.
KL3204	4	n/a	4 RTD for resistance thermometers, preset PT100.
KL3311	1	n/a	1 Thermocouple input, open-circuit recognition, preset type k.
KL3312	2	n/a	2 Thermocouple inputs, open-circuit recognition, preset type k.
KL3314	4	n/a	4 Thermocouple inputs, open-circuit recognition, preset type k.
KL3351	2	n/a	1 resistor bridge input (strain gauge), 16 bit.
KL3356	2	n/a	1 resistor bridge input (strain gauge), 16 bit.
KL3403	3	n/a	3 phase power measurement, 500V, 1A.
KL3404	4	n/a	4 Analogue inputs, $\pm 10\text{V}$ , 12 bit.
KL3408	8	n/a	8 Analogue inputs, $\pm 10\text{V}$ , 12 bit.
KL3444	4	n/a	4 Analogue inputs, 0-20mA, 12 bit.
KL3448	8	n/a	8 Analogue inputs, 0-20mA, 12 bit.
KL3454	4	n/a	4 Analogue inputs, 4-20mA, 12 bit.
KL3458	8	n/a	8 Analogue inputs, 4-20mA, 12 bit.
KL3464	4	n/a	4 Analogue inputs, 0-10V, 11 bit.
KL3468	8	n/a	8 Analogue inputs, 0-10V, 11 bit.

All unipolar inputs are scaled where minimum input is 0 and a maximum input is 32767. For a bipolar input, -10V will return -32768 (see Table 6.9 *Analogue input voltage references* below for details).

**Table 6.9 Analogue input voltage references**

Input Range	Minimum Input	Maximum Input	Resolution
0-10V	0V = 0	+10V = 32767	5mV
$\pm 10\text{V}$	-10V = -32768	+10V = 32767	5mV
0-20mA	0mA = 0	20mA = 32767	5 $\mu\text{A}$
4-20mA	4mA = 0	20mA = 32767	4 $\mu\text{A}$

# 6.5 Analogue output terminals

Analogue Outputs are assigned to menu 4. A maximum of 100 analogue outputs can be connected to a single bus coupler (see Table 6.10 *Analogue output parameter allocations* ). All parameters are write only.

Table 6.10 Analogue output parameter allocations

Reference	I/O Point
#4.00	0
#4.01	1
#4.02	2
#4.xx	xx
#4.98	98
#4.99	99

## 6.5.1 Supported terminals

The bus terminal blocks listed in Table 6.11 *Supported analogue output terminals* are all classed as "Analogue Output Terminals" and are all assigned to parameters within menu 4.

**NOTE** For the latest list of supported analogue output terminals either contact your supplier or local Drive Centre.

Table 6.11 Supported analogue output terminals

Terminal	Inputs	Outputs	Description
KL4001	n/a	1	1 Analogue output, 0-10V, 12 bit.
KL4002	n/a	2	2 Analogue output, 0-10V, 12 bit.
KL4004	n/a	4	4 Analogue output, 0-10V, 12 bit.
KL4011	n/a	1	1 Analogue output, 0-20mA, 12 bit.
KL4012	n/a	2	2 Analogue output, 0-20mA, 12 bit.
KL4014	n/a	4	4 Analogue output, 0-20mA, 12 bit.
KL4021	n/a	1	1 Analogue output, 4-20mA, 12 bit.
KL4022	n/a	2	2 Analogue output, 4-20mA, 12 bit.
KL4024	n/a	4	4 Analogue output, 4-20mA, 12 bit.
KL4031	n/a	1	1 Analogue output, $\pm$ 10V, 12 bit.
KL4032	n/a	2	2 Analogue output, $\pm$ 10V, 12 bit.
KL4034	n/a	4	4 Analogue output, $\pm$ 10V, 12 bit.
KL4112	n/a	2	2 Analogue output, 0-20mA, 15 bit.
KL4132	n/a	2	2 Analogue output, $\pm$ 10V, 12 bit.
KL4404	n/a	4	4 Analogue output, 0-10V, 12 bit.
KL4408	n/a	8	8 Analogue output, 0-10V, 12 bit.
KL4414	n/a	4	4 Analogue output, 0-20mA, 12 bit.
KL4418	n/a	8	8 Analogue output, 0-20mA, 12 bit.
KL4424	n/a	4	4 Analogue output, 4-20mA, 12 bit.
KL4428	n/a	8	8 Analogue output, 4-20mA, 12 bit.
KL4434	n/a	4	4 Analogue output, $\pm$ 10V, 12 bit.
KL4438	n/a	8	8 Analogue output, $\pm$ 10V, 12 bit.
KL4494	2	2	2 Analogue output 2 input, $\pm$ 10V, 12 bit.

## 6.6 Special function input terminals

A maximum of 100 special function input channels can be connected to a BK7200 CTNet bus coupler.

Process data exchanges are carried out through parameters #5.00 to #5.99, where each of these parameters represents a channel on the terminal bus. Each individual terminal determines the format of the process data that is to be used. Particular terminals may have their control/status byte as the least significant byte.

Register communication with the internal data structure of special function terminals can be achieved through Beckhoffs own KS2000 software.

## 6.7 Special function output terminals

A maximum of 100 special function outputs can be connected to a BK7200 CTNet bus coupler.

Process data exchanges are carried out through parameters #6.00 to #6.99, where each of these parameters represents a channel on the terminal bus. Each individual terminal determines the format of the process data that is to be used. Particular terminals may have their control/status byte as the Least Significant Byte.

Register communication with the internal data structure of special function terminals can be achieved through Beckhoffs own KS2000 software.

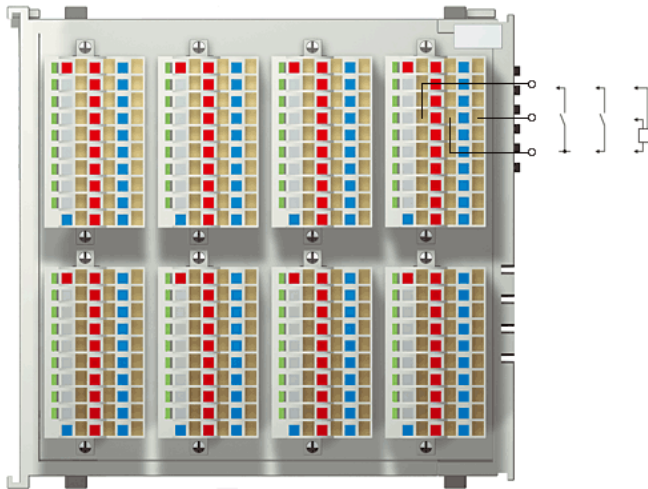
Safety Information	Introduction	Electrical Installation	CTNet Installation	Getting Started	Terminal Configuration	Cyclic Data	Non-cyclic Data	Diagnostics	KS2000 Configuration Tool	Menu 0	Glossary Of Terms	Index
--------------------	--------------	-------------------------	--------------------	-----------------	------------------------	-------------	-----------------	-------------	---------------------------	--------	-------------------	-------

## 6.8 Large terminals

Figure 6-1 *KM2008 large digital output terminal* shows a KM2008 large digital output terminal.

- The Beckhoff KM2008 is a large digital output terminal giving access to up to 64 digital outputs from the same terminal.
- The first column of blocks on the KM2008 (the top left and bottom left) contain 16 digital outputs, these are represented by bits 0 - 15 of parameter #2.00.
- The second column represent bits 0 - 15 of parameter #2.01.
- The third column represent bits 0 - 15 of parameter #2.02.
- And the fourth and final column represent bits 0 - 15 of parameter #2.03.
- The lights to the left of each of the digital output channels light up when the specific channel is enabled.

Large digital output terminals such as the KM2008 operate as any other digital output terminal.



**Figure 6-1 KM2008 large digital output terminal**

There are also large digital input terminals such as the KM1002. These large terminals only take up 1 of the allocated maximum 64 terminals on the K-bus allowing for easy referencing of specific channels.

## 6.9 Example configuration 1

The configuration shown in Figure 6-2 *Terminal configuration example 1* below provides 4 digital inputs and 6 digital outputs, plus 2 analogue inputs and outputs. Table 6.12 *Terminal configuration example 1* shows the parameters which can be accessed to read the status of the input terminals, or update the status of the output terminals.

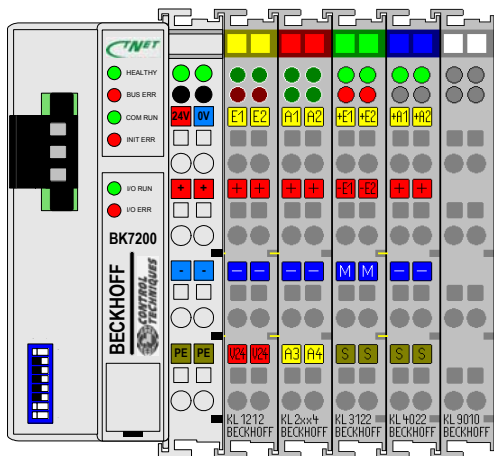


Figure 6-2 Terminal configuration example 1

Table 6.12 Terminal configuration example 1

Terminal Position	Terminal	Terminal Function	Parameter Reference
1	KL1212	Digital Input 0	#1.00 bit 0
1	"	Digital Input 1	#1.00 bit 1
1	"	Digital Input 2	#1.00 bit 2
1	"	Digital Input 3	#1.00 bit 3
1	"	Digital Output 0	#2.00 bit 0
1	"	Digital Output 1	#2.00 bit 1
2	KL2114	Digital Output 2	#2.00 bit 2
2	"	Digital Output 3	#2.00 bit 3
2	"	Digital Output 4	#2.00 bit 4
2	"	Digital Output 5	#2.00 bit 5
3	KL3122	Analogue Input 0	#3.00
3	"	Analogue Input 1	#3.01
4	KL4022	Analogue Output 0	#4.00
4	"	Analogue Output 1	#4.01
5	KL9010	K-bus Terminator	Not Applicable

# 6.10 Example configuration 2

The configuration in Figure 6-3 *Terminal configuration example 2* has been extended to provide 10 digital inputs and 14 digital outputs, plus 15 analogue inputs and 4 analogue outputs. The arrows shown at the bottom of Figure 6-3 indicate the new positions of the terminals used in Figure 6-2 *Terminal configuration example 1* on page 29. Table 6.13 *Terminal configuration example 2* on page 31 shows the parameters which have been assigned to the terminals which can be accessed to read the status of the input terminals, or update the status of the output terminals.

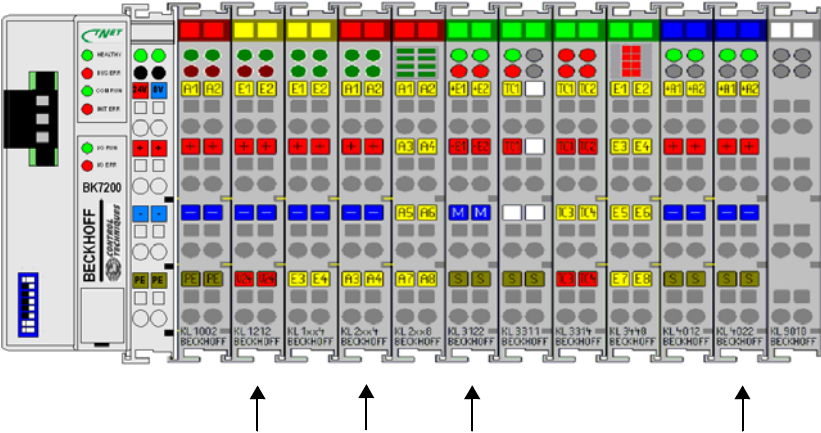


Figure 6-3 Terminal configuration example 2

**Table 6.13 Terminal configuration example 2**

KLx xxx	Terminal	Input/Output Function	Parameter Reference	KLx xxx	Terminal	Input/Output Function	Parameter Reference
1	KL1002	Digital Input 0	#1.00 bit 0	5	"	Digital Output 12	#2.00 bit 12
1	"	Digital Input 1	#1.00 bit 1	5	"	Digital Output 13	#2.00 bit 13
2	<b>KL1212</b>	Digital Input 2	#1.00 bit 2	6	<b>KL3122</b>	Analogue Input 0	#3.00
2	"	Digital Input 3	#1.00 bit 3	6	"	Analogue Input 1	#3.01
2	"	Digital Input 4	#1.00 bit 4	7	KL3311	Analogue Input 2	#3.02
2	"	Digital Input 5	#1.00 bit 5	8	KL3314	Analogue Input 3	#3.03
2	"	Digital Output 0	#2.00 bit 0	8	"	Analogue Input 4	#3.04
2	"	Digital Output 1	#2.00 bit 1	8	"	Analogue Input 5	#3.05
3	KL1114	Digital Input 6	#1.00 bit 6	8	"	Analogue Input 6	#3.06
3	"	Digital Input 7	#1.00 bit 7	9	KL3448	Analogue Input 7	#3.07
3	"	Digital Input 8	#1.00 bit 8	9	"	Analogue Input 8	#3.08
3	"	Digital Input 9	#1.00 bit 9	9	"	Analogue Input 9	#3.09
4	<b>KL2114</b>	Digital Output 2	#2.00 bit 2	9	"	Analogue Input 10	#3.10
4	"	Digital Output 3	#2.00 bit 3	9	"	Analogue Input 11	#3.11
4	"	Digital Output 4	#2.00 bit 4	9	"	Analogue Input 12	#3.12
4	"	Digital Output 5	#2.00 bit 5	9	"	Analogue Input 13	#3.13
5	KL2408	Digital Output 6	#2.00 bit 6	9	"	Analogue Input 14	#3.14
5	"	Digital Output 7	#2.00 bit 7	10	KL4012	Analogue Output 0	#4.00
5	"	Digital Output 8	#2.00 bit 8	10	"	Analogue Output 1	#4.01
5	"	Digital Output 9	#2.00 bit 9	11	<b>KL4022</b>	Analogue Output 2	#4.02
5	"	Digital Output 10	#2.00 bit 10	11	"	Analogue Output 3	#4.03
5	"	Digital Output 11	#2.00 bit 11	12	KL9010	K-bus Terminator	Not Applicable

Digital inputs and outputs should be grouped together, as they need to have power supplied through the power contacts to drive external relays, etc. Voltage output analogue modules do not use the power contacts, so they should be placed at the end of the line of terminals but before the K-bus terminator terminal which must always be last.

It can be seen that the digital input and output terminals have been fitted BEFORE the analogue terminals. However, this does not affect the addressing of the analogue input and output terminals which occurs when the K-bus first scans the terminals during initialisation, although the analogue input terminal will now be the 6th terminal to be found, it is still the 1st analogue input terminal. Therefore, when it is entered into the database, both inputs will be assigned the first available parameter numbers in menu 3, which will still be 0 and 1. Hence, there is no change in the terminal address. As additional analogue input modules are added, they will get the next available parameters in menu 3.

**NOTE** When adding input and output terminals to a bus coupler, ensure that each type of input is added after the last terminal block of a similar type. This will ensure that all existing terminal and parameter mappings will not be affected.

**NOTE** Table 6.13 above terminals KL1212, KL2114, KL3122 and KL4022 have been highlighted to show the new positions of the terminals from Table 6.12 *Terminal configuration example 1* on page 29.

## 7 Cyclic Data

SyPT Pro must be used to configure a BK7200 module to transmit cyclic data over the CTNet network. SyPT provides a graphical network configuration tool, which displays all configured cyclic links between nodes. This manual assumes that the user has a basic knowledge of using SyPT to configure CTNet networks. For more information refer to the CTNet user guide.

### 7.1 Fast and slow cyclic data channels

To configure cyclic data transfers, “data links” must be defined for either fast or slow cyclic data channels. Each link is configured to transmit a defined set of consecutive registers or parameters from within a particular menu in the BK7200, to a defined set of consecutive registers or parameters in the target node. This process is known as “binding” registers together.

There are two limitations when defining the cyclic data links to be transmitted and the number of registers to be transmitted by the BK7200 module:

1. A maximum of 20 separate links can be defined for a single node. This total includes both fast and slow data links.
2. No individual link may transfer more than 20 consecutive registers.

Each link runs on successive token rotations. The first defined link is transmitted on the first token rotation after the “synchronisation message”, the next link on the next token rotation and so on.

### 7.2 Cyclic/Non-cyclic data - time allocations

Figure 7-1 below shows a typical example of time allocation of cyclic and non-cyclic data over an 80ms period on CTNet. The example below is set-up such is that the fast cyclic reads occur every 10ms and the slow cyclic reads occur every 50ms (#MM.25 of the SM-Applications producing the cyclic data rates = 510). As you can see the fast cyclic data runs each time 10ms elapses, after 50ms the fast cyclic reads occur as usual and then the slow cyclic reads occur straight after all fast cyclic reads have finished (fast cyclic reads always finish before the slow cyclic reads can start). The area depicted by the grey area in Figure 7-1 represents slack time not used by the cyclic data, this is available for use by any non-cyclic data (so long as the fast/slow cyclic reads do not take up all available time between each set of reads).

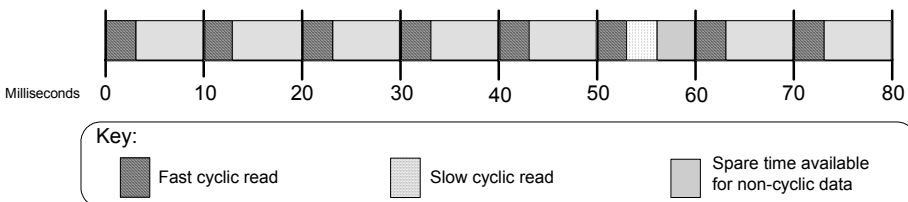


Figure 7-1 Cyclic/Non-cyclic time allocations



## 7.3 Overloading network nodes

Care must be taken when configuring a network to ensure that the BK7200 does not get overloaded with incoming messages. The BK7200 is capable of processing up to 4 messages every millisecond (4000 messages per second). If the module is overloaded with incoming messages, messages may be lost before they can be processed and the cyclic data transfer may be corrupted. The number of messages arriving over CTNet can be monitored in #0.02 in the BK7200 bus coupler (see Chapter 11.1 *Menu 0 parameters* on page 48 for more information).

The K-bus and CTNet are asynchronous meaning the terminal update time via the serial K-bus will decrease as the CTNet message loading increases and this can be monitored in #0.03 in the BK7200. The balance between the CTNet cyclic data update and the K-bus terminal update time depends on both the amount of CTNet messages to be processed and the number of terminals connected to the coupler.

A good example of this is where the BK7200 could become overloaded when every node on the network is sending cyclic data to the BK7200. On a large network, say 50 drives, this can mean that the bus coupler suddenly receives 50 messages in very quick succession, cannot process them quickly enough and loses some of the messages. The effect of the lost messages could indicate to the monitoring node that several drives are not functioning, when this is not actually the case and all nodes are operating correctly.

### 7.3.1 Aliasing

Aliasing is a signal processing term. Aliasing occurs when a system is measured at an insufficient sampling rate. It is perhaps best explained through example.

Figure 7-1 below shows a switch with the lower position being 'Off' and at its higher position the switch is 'On'. Below the signal of the switch is the sample rate for the signal of the switch and the actual measured signal are not the same, most importantly the area circled below where the switch was turned on for a short period of time was missed by the measured signal because the signal was not sampled within this time.

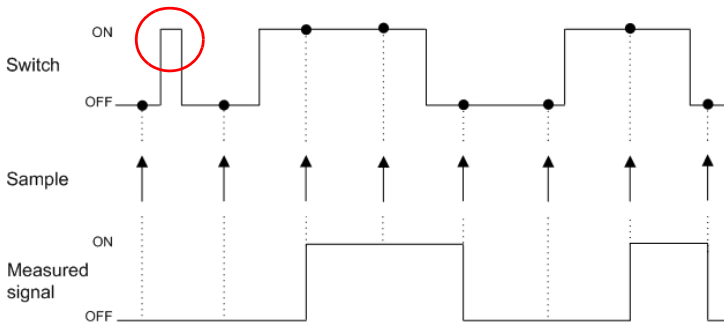


Figure 7-2 Aliasing example

## 7.4 Asynchronous sampling

In this section the following shorthand expressions will be used:

$f_{\text{CyclicDataRate}}$  = Parameter #0.02 of the Beckhoff 7200 bus coupler (CTNet cycles per second).

$f_{\text{k-bus}}$  = Parameter #0.03 of the Beckhoff 7200 bus coupler (K-bus cycles per second).

No sample will be missed over CTNet if  $f_{\text{k-bus}} > f_{\text{CyclicDataRate}}$  and  $f_{\text{CyclicDataRate}} > 0$ .

$f_{\text{CyclicDataRate}}$  is the amount of the cycles per second of fast and slow cyclic data, as well as non-cyclic data.

To decrease the time between the sample on the k-bus and the value being received over CTNet, modify the CTNet sync set-up (#MM.25) on the SM-Applications (i.e. fast and slow cyclic data) ensuring  $f_{\text{k-bus}} > f_{\text{CyclicDataRate}}$ .

### 7.4.1 Sample rate example 1

This is a simple example describing the steps which would need to be calculated in order to read an analogue signal, maximum frequency of 100Hz over fast cyclic data without aliasing (missing transitions).

If parameter #MM.25 of the SM-Applications module has a value of '1005', this would mean that fast cyclic communications would be set-up to run every 5ms and slow cyclic communications to run every 50ms ( $10\text{ms} * 5\text{ms}$ ).

$f_{\text{CyclicDataRate}}$  would read 200, assuming that  $f_{\text{k-bus}} > f_{\text{CyclicDataRate}}$  (*fast cyclic data component*), then there would be no aliasing due to the k-bus; this is calculated as follows:

The highest possible frequency that can be sampled =

$$f_{\text{CyclicDataRate}} \text{ (fast cyclic data component)} = 200 / 2 = 100\text{Hz}$$

This means that no aliasing of the signal will occur by anything other than the 'Analogue to Digital Converter' (ADC) in the analogue terminal (see specification for ADC sample rate in module documentation).

This example is for fast cyclic communications, if we wanted to use slow cyclic communications to transfer the signal, the calculation is as follows:

The highest frequency that could be sampled =

$$f_{\text{CyclicDataRate}} \text{ (slow cyclic data component)} = 20 / 2 = 10\text{ Hz}$$

In this example there will be aliasing apparent in the signal received over CTNet, for every 10 cycles of the 100Hz signal, only one sample would be read. This may be acceptable if the data being received over CTNet is non-urgent, or only processed in a low priority task, tolerating aliasing will reduce the need for high speed cyclic data, thus reducing CTNet traffic.

## 7.5 Setting up the BK7200 for cyclic communications

### 7.5.1 Introduction

Chapter 7.5.3 *Example configuration* shows a step-by-step process of how to set up the BK7200 bus coupler for cyclic communications.

### 7.5.2 Required equipment

- Beckhoff BK7200 CTNet bus coupler.
- Beckhoff input terminals.
- Beckhoff output terminals.
- Beckhoff bus end terminal (e.g. KL9010).
- SyPT Pro.
- Unidrive SP (or any other drive with CTNet capability).
- SM-Applications module (or any other module with CTNet capability).

### 7.5.3 Example configuration

Below shows the set-up which will be used for the following example of how to set-up cyclic communications on a BK7200 CTNet bus coupler.

The set-up contains a BK7200 CTNet bus coupler (plus any connected terminals) connected via CTNet to an SM-Applications module inserted on a Unidrive SP, the Unidrive SP is then connected via the CT USB to RS485 communications cable (part number: 4500-0096) to a PC with SyPT Pro installed, this will allow the use of SyPT Pro to configure any cyclic communications on the network.

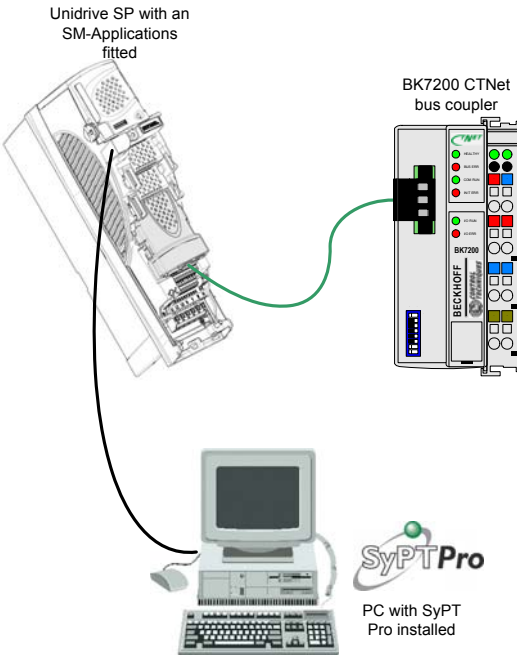


Figure 7-3 BK7200 network configuration

Once the SyPT Pro application software has been started and the configuration is set-up as required, you should have a configuration that at the least contains a Unidrive SP with an SM-Applications module (or any other CTNet compatible drive) plus a BK7200 CTNet bus coupler connected via CTNet as shown in Figure 7-4.

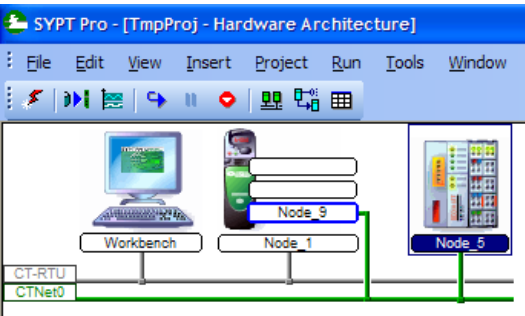



Figure 7-4 SyPT Pro set-up

The icon shown is the 'Cyclic Data' icon,  click on it, this will open the cyclic data window shown in Figure 7-5.

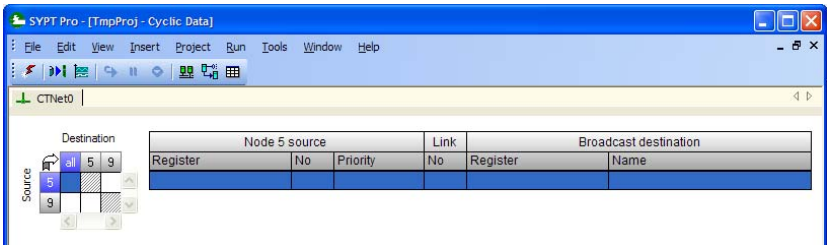
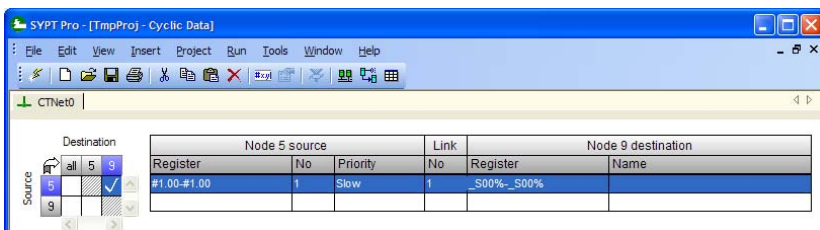


Figure 7-5 Cyclic data links window

Figure 7-5 shows (if any) the cyclic data links that are set-up between nodes, as you can see from Figure 7-4 on page 36 node 9 is an SM-applications module on the Unidrive SP and node 5 is the Beckhoff BK7200 CTNet bus coupler. The left hand matrix shows all current links between all nodes and the table situated on the right hand side shows links from specific node to node relationships.

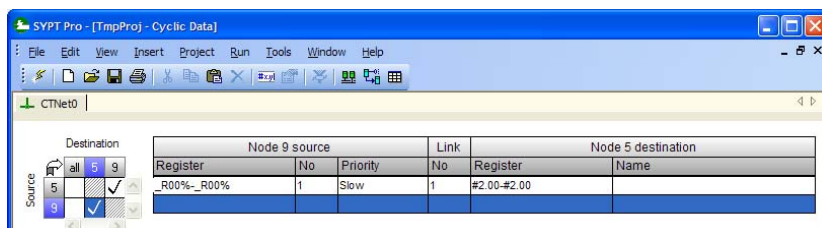
In order to create a cyclic link with a source of the BK7200 coupler and a destination of the SM-applications module, you must ensure that SyPT pro is offline.

Next as shown in Figure 7-6, as the beckhoff coupler is the source of the link, parameter #1.00 will be the source, the reason being that the input terminal which cyclic digital communications will be set-up on is a digital input KL1114 which is the first digital input terminal on the K-bus, the first channel of this terminal will be linked to incoming PLC register \_S00% of the SM-Applications module ( \_S00% could have also been represented as #73.00). You can see that there is also the option of whether or not you want SLOW or FAST cyclic communications.



**Figure 7-6 Entering a cyclic data link (1)**

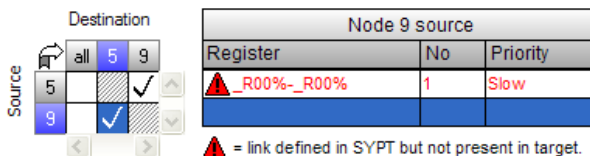
As shown in Figure 7-7, the SM-Applications is the source of the link, to make programming easier in terms of continuity it makes sense to start at the first available parameter, which in this case would be OUT PLC register 0 (\_R00% or #72.00). This PLC register will be linked to parameter #2.00 of the BK7200 bus coupler (this represents the first 16 bits of digital outputs on the bus coupler). There is also an option as to whether you want slow or fast cyclic communications.



**Figure 7-7 Entering a cyclic data link (2)**

#### 7.5.4 Downloading the cyclic data links to the SM-Applications

1. Next, save the project.
2. Click the 'Project' drop-down list, then 'Rebuild All' to add the cyclic links to the nodes.
3. Go back 'on-line'.
4. Select 'Project', 'Download All', then 'OK', to send the cyclic links to the nodes.
5. You may notice that a red warning box has appeared under the cyclic link table stating that the 'link defined in SYPT but not present in target. If this happens then you need to do to get rid of the warning, select 'Project', 'Download', choose the nodes you wish to download, which in this case is all of them, click 'OK'.



**Figure 7-8 Cyclic link defined in target but not present in node**

6. The warning will now be cleared.
7. Your cyclic communications should now be successfully set-up, see section 7.5.5 *Checking the cyclic links* on page 38 for more information on how to check that your cyclic links are correctly functioning.

### 7.5.5 Checking the cyclic links

An easy way to check whether or not the cyclic communications are configured successfully is as follows:

- While the cyclic communications are running, open the 'Watch window' in SyPT (shown in Figure 7-9 below).

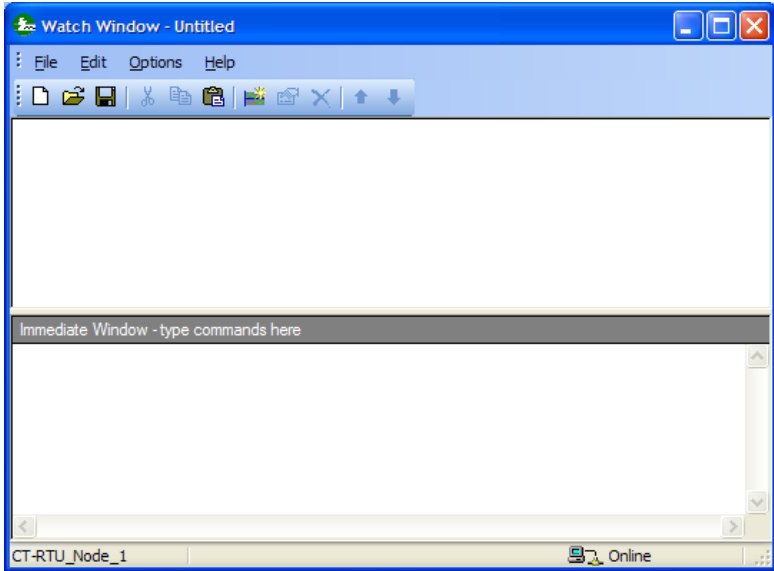



Figure 7-9 Watch Window (1)

- Click the 'New Item'  icon and the new item window will open as shown in Figure 7-10.

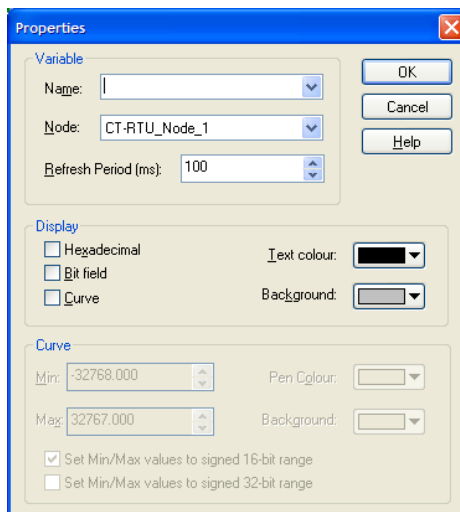
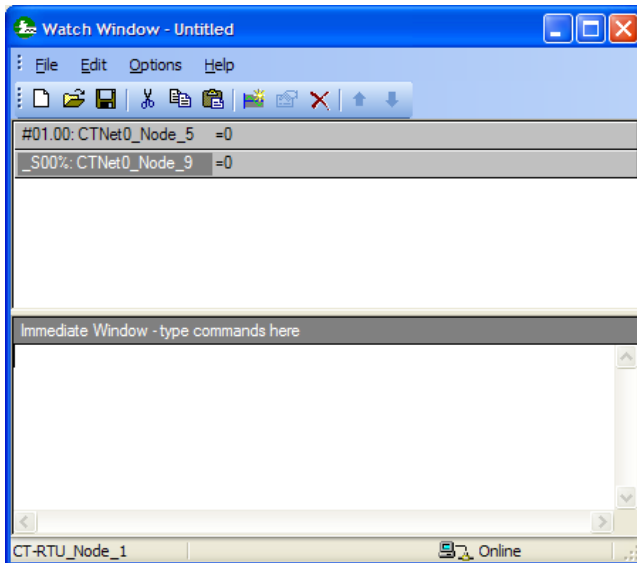


Figure 7-10 Add new item to the Watch Window

## 7.5.6 Testing the cyclic communications

1. Firstly select the 'Node' which represents the Beckhoff bus coupler, which in this instance is node 5.
2. In the 'Name' category type in '#1.00'.
3. Under the 'Display' area tick the 'Bit Field' check box.
4. Click 'OK'
5. Open the 'New Item' window again, but this time in the 'Name' category type in '\_S00%' and the node should be set to that of the SM-Applications module which in this example is node 9.
6. Again click 'OK'.
7. The watch window should now look as shown in Figure 7-11.



**Figure 7-11 Watch Window (2)**

8. In the lower half of the watch window titled 'Immediate Window' type in the following, '#2.00 = 0x00010001', this is to enable the mask settings for the digital output terminal.
9. Once all of the previous steps are completed in order, join contact 1 of the KL1114 digital input terminal to contact 1 of the KL2408 digital output terminal, you will notice that parameter #1.00 of the watch window updates to a value of '1'.

---

## 8 Non-cyclic Data

---

This non-cyclic data is particularly useful for transmitting infrequent events around the network. The BK7200 CTNet bus coupler cannot issue these commands as it does not run DPL programs, but it will respond to non-cyclic RDNET, WRNET and CHECKNODE commands issued by other nodes on the network.

A typical example where non-cyclic data may be used is on a large network for infrequent data, such as a switch to engage a pinch roller when the line is ready to start. Response time to changing the switch is not critical, since it may take several seconds for the roller to engage. Once the roller is engaged, there is no need to transmit any information about the switch over the network until the switch changes state. This provides a large reduction in the network bandwidth used for this signal and increases the bandwidth available for other data signals.

**NOTE** Depending on the application it may be advisable to check the status of outputs that are controlled from time to time and to check the state of inputs more than once to allow for noise, etc.



# 9     Diagnostics

## 9.1     Beckhoff BK7200 bus coupler firmware version

There are two simple ways of which to check the currently installed version of firmware on the Beckhoff bus coupler, both through the use of SyPT:

1. In the SyPT watch window function view parameters #0.01 and #0.04, parameter #0.01 makes up part XYYY and parameter #0.04 makes up part ZZ, to make up the six digit firmware version in the form XYYZZZ.  
e.g. If parameter #0.01 had a value of '104' and parameter #0.04 had a value of '11', then the firmware version would be '01.04.11'.
2. Again in SyPT, so long as the project is online, from the 'Project' menu choose 'Identify Node', along side the description of 'Core/system' will be the currently installed firmware version.

### 9.1.1     Updating the firmware

The BK7200 bus coupler's firmware can be updated through the use of either the Beckhoffs own 'KS2000' terminal configuration application or an equally effective DOS firmware updater which is available from your supplier or local drive centre. The correct cable must be used see Chapter 5.8 *Beckhoff coupler programming cable* on page 17 for more information.

1. To update the firmware through KS2000, the communications between the bus coupler and the PC must be set-up correctly. From the 'Online' drop-down list, select 'Coupler' and then 'Firmware Update'. A new page will open, on the right-hand side of the page is a button labelled 'Select', this is where you can choose the required firmware file, finally click 'Start' to update the firmware.
2. The BK7200 bus coupler can also be updated through 'Firmware Update V1.0' which is available from your supplier or local drive centre, execute the program, select the relevant COM port, enter the filename of the applicable firmware file and select 'Load'.

**NOTE**     The firmware file must be present in the same folder that the 'firmware update V1.0.exe' file is being ran from.

The filename of the .hex firmware file, must be no longer than 12 characters long, this includes the '.hex' file extension.

- e.g.     **V010400.hex** would be ok  
          **mynewhexfile.hex** would not

# 9.2 Diagnostic LEDs

The terminals attached to the bus coupler are checked when it is first switched on. A correct start-up procedure is indicated by the red LED "I/O ERR" going out. If this LED is flashing, then there is a fault somewhere along the K-bus. The position of the problem can be decoded by observing the flashing lights with the help of Table 9.1 *Diagnostic LEDs look-up table* .

**Table 9.1 Diagnostic LEDs look-up table**

LED				Significance	Remedy
HEALTHY	BUS ERR	COM RUN	INIT ERR		
off	off	off	off	Fieldbus configuring.	Wait while the fieldbus boots up.
off	off	off	flashing	A serious error occurred during the initialisation of the fieldbus, this is most likely caused by memory or configuration errors.	Check: 1. Baud rate DIP switches are correctly set. 2. Ensure you have the latest firmware installed.
on	off	off	off	The configuration of the fieldbus has been successful, however no messages are being received at present.	Check: 1. If cyclic data is required ensure that there is a sync master on the CTNet network. 2. That messages are being directed to the coupler.
on	off	on	off	The BK7200 is currently receiving messages over the CTNet network	Nothing, everything is currently working correctly.
on	on	off	on	The BK7200 is currently initiating a CTNet RECON.	Check: 1. The CTNet cable is plugged into the coupler. 2. That there is at least one other node operating on the network. 3. That the bus cable is intact.
on	on	off	off	CTNet RECON occurring	When a node is removed or inserted onto a network, then a RECON will occur.

The two green lights on the top right of the BK7200 bus coupler are there to indicate the voltage supply. The left sided LED shows the 24V supply of the bus coupler, while the right sided LED shows the supply (if any) to the power contacts.

# 9.3 Error codes and their meanings

The two I/O LEDs located at the bottom of the row of LEDs on the BK7200 bus coupler are used to display the operating mode of the bus terminals and the connections interlocking the bus terminals on the bus. When the green LED is lit up this means that the communications with the fieldbus system is working correctly, however if the red LED is lit up then there is a fault somewhere on the bus (see Table 9.1 *Diagnostic LEDs look-up table* for more information).

**Table 9.2 Error code flashing sequences**

Description	Error Reported
Rapid Flashing	Start of the Error Code
First slow sequence	Type of error
Second slow sequence	Location of error

**Table 9.3 Error code look-up table**

Error Code	Error Argument	Description	Remedy
Continuous blinking	0	EMC problems (check installation).	- Check power supply for over voltage or under voltage peaks. - Implement EMC measures. - If a terminal bus error is present, it can be localised by a restart of the coupler (by switching off and then on again).
1 pulse	0	EEPROM checksum error.	- Set to default factory settings using KS2000.
	1	In line code buffer overflow.	- Connect fewer terminals; too many entries in the database for the programmed configuration. - Software update required for the coupler.
2 pulses	0	Programmed configuration. Incorrect database entry.	- Check programmed configuration.
	n (n > 0)	(terminal n)	- Incorrect table entry / bus.
3 pulses	0	K-bus command error.	- No terminal connected; attach terminals. - One of the terminals is defective; halve the number of terminals attached and check whether the error is still present with the remaining terminals, repeat until the defective terminal is located.
4 pulses	0	K-bus data error.	- Check whether the end terminal 9010 is connected correctly.
	n	Break behind terminal n	- Check whether the n+1 terminal is correctly connected; replace if necessary.
5 pulses	n	K-bus error with register communication on terminal .	- Replace terminal.
6 pulses	n	Terminal not supported.	- If the terminal n is a complex terminal, and the control/status must be mapped, change data type so that the process data is a maximum of 3 bytes; else change data type to be 4 bytes. If this is not possible, terminal is not supported.

## 9.4 Location of error

The position of the last terminal before the error is represented by the number of flashes occurring, this does not include passive bus terminals such as power input terminals see Table 9.3 *Error code look-up table* on page 43.

Even when the fault has been cleared, the LED will not stop flashing and the operating mode will remain at stop until the bus coupler has been reset.

It is not advisable to plug or unplug terminals into the bus coupler without first ensuring that the power is off.

**NOTE** Some terminals may appear as two terminals on the bus, terminals with this behaviour are documented as so in its relevant data sheet.

## 9.5 Cannot establish CTNet connection

The following steps should be used when attempting to diagnose problems on CTNet networks:

1. Ensure that the correct type of cable is used. CTNet runs at very high data rates, and consequently requires high quality cable. Performance cannot be guaranteed if the specified Control Techniques CTNet cable is not used (support will not be provided where non-approved cable has been used).
2. Termination resistors **MUST** be fitted. Unpredictable network behaviour may result and the noise immunity of the network will also be severely reduced without proper line termination resistors ( $82\Omega \pm 1\%$  for the current CTNet cable).
3. Update the firmware of the SM-Applications and the BK7200 CTNet bus coupler.
4. Check the node configuration settings on all nodes. Every node must have a unique node address, all node data rates must be identical and only one drive must be set to generate the synchronisation message.
5. Ensure that the data rate selected is allowed for the length of network cable installed. If necessary, try reducing the network data rate at all nodes to establish communications. Repeaters may be required to extend the network length for a given data rate.
6. Refer to the CTNet manual for CTNet network maximum lengths. If more than 32 unit loads are connected to a single section of cable, network repeaters will be required. Network repeaters affect the maximum number of unit loads on each section of cable.

# 10      KS2000 Configuration Tool



Any changes made to KS2000 may have serious implications, ensure you understand the implications of any changes made.

## 10.1      KS2000 introduction

The KS2000 configuration software permits commissioning and parameterisation of the Beckhoff Fieldbus modules and of the Beckhoff Bus Terminals. The connection between the fieldbus components and the PC is established via the connection cable provided with KS2000. The KS2000 configuration software requires Windows NT, 2000 or XP operating systems.

The KS2000 software offers access to the process image of the fieldbus components. In this way it is possible to monitor the input and output images of the Bus Terminals. Access to individual signal channels is supported through a scope functionality.

## 10.2      KS2000 features

When KS2000 is first run, the screen in Figure 10-1 *Beckhoff KS2000 start-up screen* will be shown, it is advisable that you check the communication settings of the connection before you attempt to connect to the bus coupler.

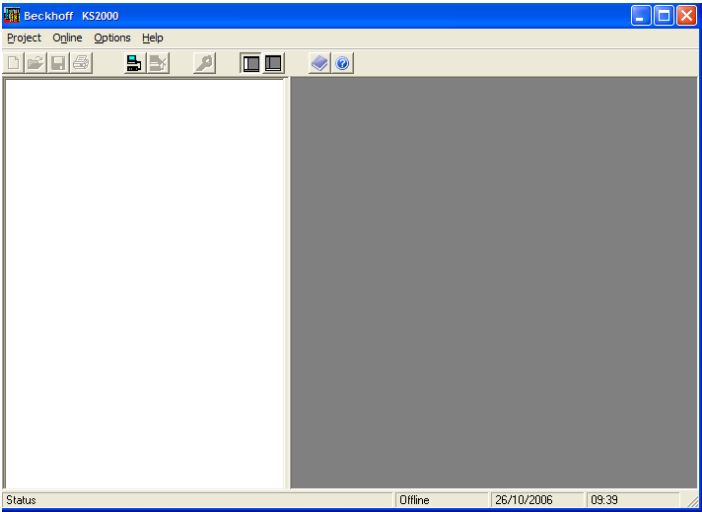
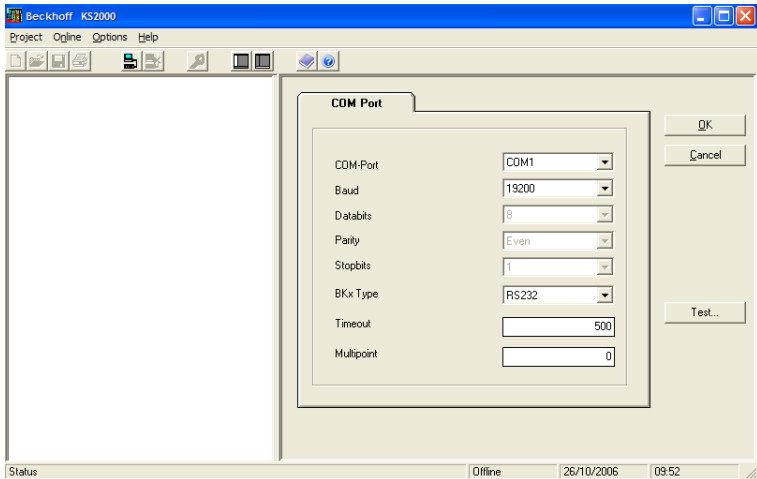


Figure 10-1 Beckhoff KS2000 start-up screen

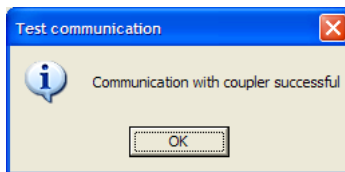
## 10.2.1 Changing the communication settings

1. From the 'Options' drop-down menu, select 'Communication channel'.
2. Next select 'Via COM'.
3. The window as shown in Figure 10-2 will be displayed.
4. Choose the COM port you are connecting to the PC.
5. Select the relevant baud rate.
6. Select whether your connection is either RS232 or RS485.
7. Finally to test that the connection to the bus coupler, click the 'Test...' button.




**Figure 10-2 Communications set-up**

If the connection test was successful, the information box shown in Figure 10-3 will appear.



**Figure 10-3 Communication with coupler successful**

Once the settings are correctly configured click 'Ok'.

To go online, click the 'Online' button  from the KS2000 toolbar. You will be asked if you want to create new XML devices, click 'OK' to continue (as shown in Figure 10-4).

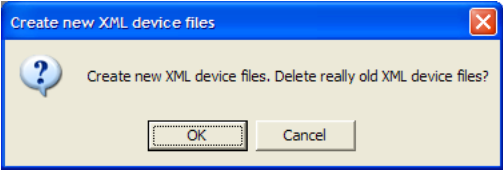


Figure 10-4 Create new XML devices

The layout of KS2000 is split up into 2 sections (as shown in Figure 10-5), the left hand side shows a list of the connected terminals, settings and configurations. The right side shows a graphical image of the current terminals connected to the BK7200 bus coupler.

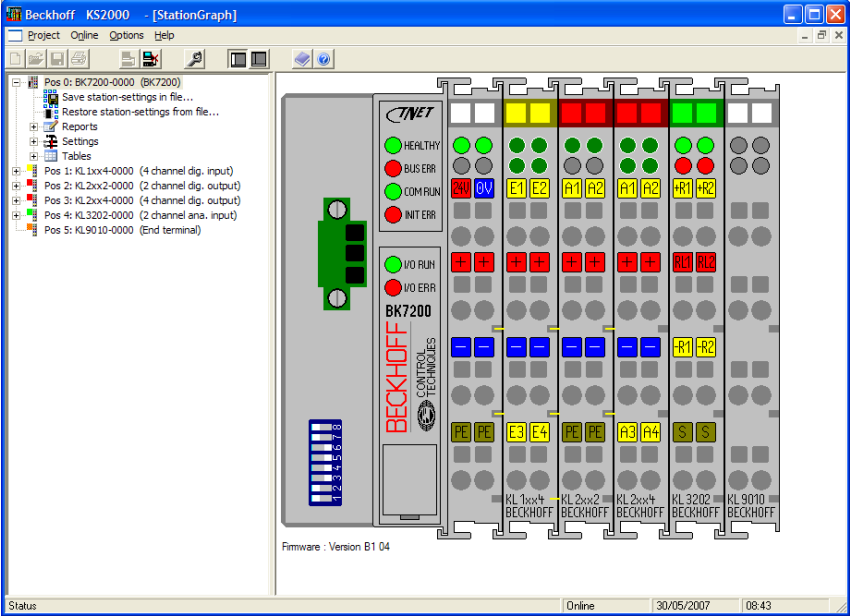


Figure 10-5 Beckhoff KS2000 online - home screen

### 10.3 Purchasing KS2000

To purchase the KS2000 application software contact your supplier or local drive centre.

## 11.1 Menu 0 parameters

**Table 11.1 Menu 0 parameters**

	Parameter Description	Range	Default	Type
0.01	Software version XYY	0 to 9999	-	Read-Only
0.02	CTNet cycles per second	0 to 32767	0	Read-Only
0.03	K-bus cycles per second	0 to 32767	0	Read-Only
0.04	Software Version ZZ	0 to 99	-	Read-Only
0.05	Simple Watchdog	0 to 2000	0	Read-Write
0.06	2-byte PLC interface control	0 to 65535	0	Read-Write
0.07	2-byte PLC interface status	0 to 65535	0	Read-Only
0.08	Unsupported Terminal	0 to 64	0	Read-Only
0.09	Reserved			
0.10	CTNet number of messages	0 to 2147483647	0	Read-Only
0.11	CTNet cyclic overruns	0 to 65535	0	Read-Only
0.12	CTNet lost received messages	0 to 65535	0	Read-only
0.13	CTNet retries	0 to 65535	0	Read-Only
0.14	CTNet recons	0 to 65535	0	Read-Only
0.15	CTNet excessive Naks	0 to 65535	0	Read-Only
0.16	CTNet duplicate sync messages	0 to 65535	0	Read-Only
0.17	CTNet my recons	0 to 65535	0	Read-Only

Menu 0 can also be accessed through the use of menu 90, this allows the use of cyclic data to be mapped to any menu 0 parameter using SyPT.



### 11.1.1 #0.01 - Software version XXY

Parameter #0.01 of the BK7200 bus coupler contains the first 4 digits of the 6 digit firmware version (more information can be found in section 9.1 *Beckhoff BK7200 bus coupler firmware version* on page 41).

### 11.1.2 #0.02 - CTNet cycles per second

Parameter #0.02 of the BK7200 bus coupler shows the current rate of CTNet cycles per second being received, the value of this parameter is dependant on the value in the CTNet sync master.

### 11.1.3 #0.03 - K-bus cycles per second

Parameter #0.03 of the BK7200 bus coupler shows the current rate of K-bus cycles per second being received by the bus coupler, with firmware version 01.04.00 of the bus coupler the average speed of the K-bus on the BK7200 is roughly 1700 cycles per second, this is approximately 65% faster than the previous firmware version 01.03.00 (testing based on 3 digital terminals connected to the BK7200 bus coupler).

**NOTE** K-bus speed is subject to change and is for guidance purposes only.

### 11.1.4 #0.04 - Software version ZZ

Parameter #0.04 of the BK7200 bus coupler contains the last 2 digits of the 6 digit firmware version, (more information can be found in section 9.1 *Beckhoff BK7200 bus coupler firmware version* on page 41).

### 11.1.5 #0.05 - Simple watchdog

Parameter #0.05 of the BK7200 bus coupler is a read/write parameter, while it has a value of 0 the watchdog function is disabled, if it contains a value in the range of 1 - 2000, then the watchdog is enabled (more information can be found in Chapter 11.2 *Watchdog* on page 51).

### 11.1.6 #0.06 - 2-byte PLC interface Control

Parameter #0.06 of the BK7200 bus coupler is the control parameter for the 2-byte PLC interface control.

### 11.1.7 #0.07 - 2-byte PLC interface Status

Parameter #0.07 of the BK7200 bus coupler is the status parameter for the 2-byte PLC interface control.

### 11.1.8 #0.08 - Unsupported terminal

Parameter #0.08 of the BK7200 bus coupler will contain a value in the range of 0 - 64 and if applicable the value will represent the position of the first unsupported terminal on the K-bus.

### 11.1.9 #0.09 - Reserved

Parameter #0.09 of the BK7200 bus coupler is reserved for future use.

### **11.1.10#0.10 - CTNet no of messages**

Parameter #0.10 of the BK7200 bus coupler counts up the added total of CTNet messages sent since the BK7200 bus coupler was last powered up. This parameter is read only.

### **11.1.11#0.11 - CTNet cyclic overruns**

Parameter #0.11 of the BK7200 bus coupler counts up the total amount of cyclic overruns since the BK7200 was last powered up, this is a useful diagnostic parameter and gives a good indication of how healthy the network is. This parameter is read only.

### **11.1.12#0.12 - CTNet lost Rx messages**

Parameter #0.12 of the BK7200 bus coupler counts up the number of lost Rx messages since the BK7200 was last powered up. See the CTNet user guide for more information on lost messages. This parameter is read only.

### **11.1.13#0.13 - CTNet retries**

Parameter #0.13 of the BK7200 bus coupler counts up the total number of CTNet retries since the BK7200 was last powered up. This parameter is read only.

### **11.1.14#0.14 - CTNet recon**

Parameter #0.14 of the BK7200 bus coupler is a counter which counts up the total number of reconfigurations since the BK7200 bus coupler was last powered up. See the CTNet user guide for more information on CTNet reconfigurations.

### **11.1.15#0.15 - CTNet excessive NAKs**

Parameter #0.15 of the BK7200 bus coupler counts up the total number of excessive NAK messages since the BK7200 bus coupler was last powered up. See the CTNet user guide for more information on excessive NAKs. This parameter is read only.

### **11.1.16#0.16 - CTNet duplicate sync message**

Parameter #0.16 of the BK7200 bus coupler counts up the total number of duplicate sync messages since the BK7200 was last powered up. See the CTNet user guide for more information on duplicate sync messages.

### **11.1.17#0.17 - CTNet my recons**

Parameter #0.17 of the BK7200 bus coupler counts up the total number of CTNet reconfigurations since the BK7200 bus coupler was last powered up. See the CTNet user guide for more information on CTNet my network reconfigurations.

# 11.2 Watchdog



When using the Watchdog function sure that the safe state for the machine is considered.

The Watchdog is a function which provides a safety net, that will automatically reset all Digital Outputs and Analogue Outputs to 0 once a previously set timeout occurs.

In order for the watchdog function to be enabled, one node on the CTNet network must have sent a time-out value in the range of 1 through to 2000 to parameter #0.05 in the bus coupler, if necessary it is possible to write to this paramater through multiple nodes. When parameter #0.05 is written to, the time-out clock is reset to the time out value.

**NOTE** The range 1 - 2000 represents 1ms - 2000ms

Parameter #0.05 will decrease to 0 if this parameter is not written to before the value reaches 0 all digital and analogue outputs will be reset to 0. For the procedure to work effciently the watchdog time out value should always be set to a value which is 2.5x the maximum cyclic data rate.

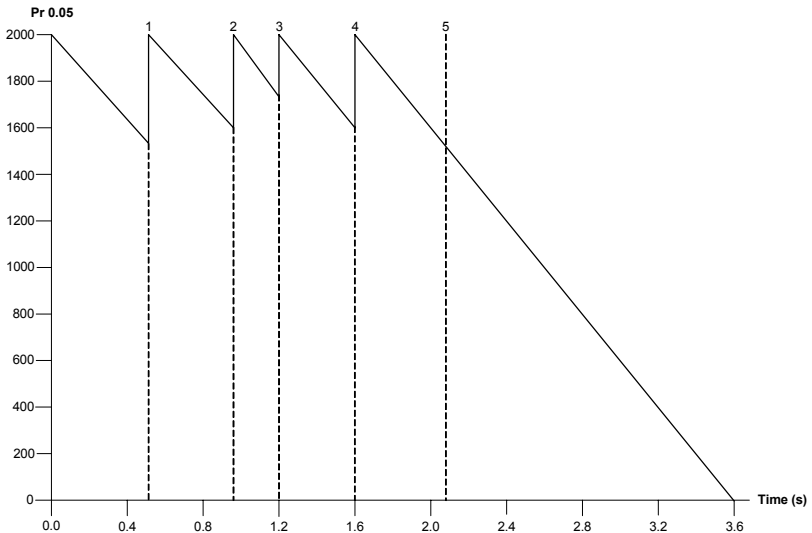
To disable the watchdog function at any time, set parameter #0.05 to 0. Everytime the bus coupler is turned on the watchdog value will need to be set again, as parameter #0.05 is reset to 0 during the initialisation process of the bus coupler, subsequently the watchdog is disabled by default.

**NOTE** When using the Watchdog on a network precautions may need to be taken in the controlling node to prevent an intermittent network, causing output to change from the off safe state to the value set in the controlling cyclic data.

Safety Information	Introduction	Electrical Installation	CTNet Installation	Getting Started	Terminal Configuration	Cyclic Data	Non-cyclic Data	Diagnostics	KS2000 Configuration Tool	Menu 0	Glossary Of Terms	Index
--------------------	--------------	-------------------------	--------------------	-----------------	------------------------	-------------	-----------------	-------------	---------------------------	--------	-------------------	-------

### 11.2.1 Watchdog example

Figure 11-1 shows the watchdog function in action. Remote nodes reset the timer (shown at points 1, 2, 3 and 4) to its original value of 2000 before parameter #0.05 reaches zero. At point 5, the connection to the CTNet network has been lost, therefore parameter #0.05 does not get updated again. When this parameter has reached zero, all analogue and digital outputs are reset to 0 or OFF respectively.



**Figure 11-1 Example Watchdog set-up**

**NOTE** It is important to be aware that the Watchdog function should only be used in suitable scenarios, it will not always be advisable to enable the watchdog function as in some circumstances it could be dangerous to reset all outputs to '0' (e.g. an anchor on a ship).

**NOTE** It is the responsibility of the system integrator to ensure that the complete system is safe under all circumstances.

### 11.3 Unsupported terminal

To find out whether or not there is one or more unsupported terminals connected to the bus coupler, check parameter #0.08, if the value is any value other than 0 then the value present indicates the position of the first unsupported terminal. See section 9.2 *Diagnostic LEDs* on page 42 and section 9.3 *Error codes and their meanings* on page 42 for more details.

# 11.4 2-byte PLC interface

The 2-byte PLC interface is provided to enable register communication with the internal register structure of complex terminals and the coupler.

Table 11.2 2-byte PLC interface

Byte	Bit address		Values
Output Byte 0	0.0	Toggle bit	0/1
	0.1	---	
	0.2	Toggle bit Reset Request	0/1
	0.3 - 0.7	Function Code	
Output Byte 1	Data byte is Write Request		0 - 255
Input Byte 0	0.0	Toggle bit	0/1
	0.1	---	
	0.2	Reset Acknowledge bit	0/1
	0.3	Error bit (Routing / Write protect)	0/1
Input Byte 1	Data byte is Read Request		

Table 11.3 2-byte PLC interface function codes

Function codes	0.7	0.6	0.5	0.4	0.3
Send Terminal Number	1	0	0	0	0
Send Table Number	1	0	0	0	1
Send Register Number	1	0	0	1	0
Write Low Byte	1	0	0	1	1
Write High Byte	1	0	1	0	0
Write High Byte and Increment Register Address	1	0	1	0	1
Read Low Byte	0	0	0	1	1
Read High Byte	0	0	1	0	0
Read High Byte and Increment Register Address	0	0	1	0	1

**NOTE** Menu 0 / Menu 90 is still available for access when the coupler has discovered an unsupported terminal on the bus coupler's line. This allows diagnostic access rights and therefore access to the 2-byte PLC interface, which may be used to rectify the terminal by changing its register values e.g. the terminal has a data type too large for CNet's 32-bit parameters.

---

## 12 Glossary Of Terms

---

**Address:** This is the unique network identification given to a networked device to allow communication on a network. When a device sends or receives data the address is used to determine the source and the destination of the message.

**Bit:** A binary digit, this may have the value 1 or 0.

**Byte:** A collection of 8 binary digits that collectively store a value. This may be signed or unsigned.

**Control word:** A collection of binary digits that are used to control the drive. Features typically include directional controls, run controls and other similar functions.

**Cyclic data:** This consists of values that are sent at regular or cyclic intervals across the network. A typical use of cyclic data would be the transmission of a speed reference or a control word.

**Data format:** Determines the quantity and function of the data sent and received across the network.

**Data rate:** Determines the communication speed of the network, the higher the value the more data can be sent across the network in the same period.

**Device:** A piece of equipment connected to a network, this may be any type of equipment including repeaters, hubs, masters or slaves.

**DIP switch:** A collection of tiny switches.

**K-bus:** The serial K-bus acts as a buffer for information transfer between the BK7200 CTNet bus coupler and CTNet itself. Used on the BK7200 to communicate to sub modules.

**Mapping:** The process of linking Beckhoff terminal values to values within the drive.

**Mask:** A filter that selectively includes or excludes certain values. For example when defining a database field, it is possible to assign a mask that indicates what sort of value the field should hold. Values that do not conform to the mask cannot be entered.

**Node:** A device on the network. This may be either a device such as a drive or part of the network such as a repeater.

**Non-cyclic data:** Data that is requested or sent by the master as required. This is not sent on a regular basis and generally allows access to any parameter. This is useful for occasional changes or configuration purposes.

**Status word:** A value that denotes the status of the drive. Each bit within the word will have a specific meaning.

**Terminal:** Terminals are individual Input/Output modules which easily slot onto the BK7200 to add additional functionality.

**Termination:** This is used at both ends of a network segment to prevent reflections and reduce noise.

**Watchdog:** A method used to determine if a communication system is healthy. A typical watchdog scheme uses a handshaking system to check both the master and slave are participating in communications.

Safety Information
Introduction
Electrical Installation
CTNet Installation
Getting Started
Terminal Configuration
Cyclic Data
Non-cyclic Data
Diagnostics
KS2000 Configuration Tool
Menu 0
Glossary Of Terms
Index

---

# Index

---

## **Symbols**

+24V DC power supply ..... 10

## **Numerics**

3-way CTNet connector ..... 11

## **A**

Analogue input terminals ..... 24

Analogue output terminals ..... 26

## **B**

BK7200 bus coupler ..... 7

BK7200 bus coupler programming cable ..... 17

## **C**

Cautions ..... 5

Compliance ..... 6

Configuration interface ..... 11

CTNet cable ..... 12

CTNet cable part numbers ..... 13

CTNet connection lost ..... 17

CTNet segment specifications ..... 14

CTNet terminal block ..... 13

Current consumption ..... 10

Cyclic data synchronisation message ..... 17

## **D**

Data rate ..... 16

Diagnostics ..... 41

Digital input terminals ..... 19

Digital output terminals ..... 22

DIP switches ..... 16

## **E**

Electrical installation ..... 10

Electrical safety ..... 5

Electrically isolated ..... 11

EN954-1 ..... 6

Example Beckhoff configuration 1 ..... 29

Example Beckhoff configuration 2 ..... 30

## **G**

General information ..... 2

Getting started ..... 15

Glossary of terms ..... 54

## **I**

ID code ..... 18

Introduction ..... 7

## **K**

K-bus ..... 11



KS2000 configuration software .....	45
<b>L</b>	
Large terminals .....	28
<b>M</b>	
Maximum network length .....	14
<b>N</b>	
Network .....	17
Node address .....	15
Noise immunity .....	13
Nominal supply current .....	10
<b>O</b>	
Overloading network nodes .....	33
<b>P</b>	
Parameters - adjusting .....	6
Pin out connections .....	12
<b>R</b>	
Ring structure .....	11
RS232 interface .....	11
<b>S</b>	
Safety information .....	5
Safety of personnel .....	5
SECURE DISABLE .....	5
Special function input terminals .....	27
Special function output terminals .....	27
Spring terminals .....	10
Supported analogue input terminals .....	24
Supported analogue output terminals .....	26
Supported digital input terminals .....	20
Supported digital output terminals .....	23
Synchronisation .....	17
<b>T</b>	
Terminal parameter allocations .....	19
Terminating resistors .....	13
<b>W</b>	
Warnings .....	5
Watchdog .....	51

Safety Information
Introduction
Electrical Installation
CTNet Installation
Getting Started
Terminal Configuration
Cyclic Data
Non-cyclic Data
Diagnostics
KS2000 Configuration Tool
Menu 0
Glossary Of Terms
<b>Index</b>







## SCIGATE AUTOMATION (S) PTE LTD

No.1 Bukit Batok Street 22 #01-01 Singapore 659592

Tel: (65) 6561 0488

Fax: (65) 6562 0588

Email: [sales@scigate.com.sg](mailto:sales@scigate.com.sg)

Web: [www.scigate.com.sg](http://www.scigate.com.sg)

Business Hours: Monday - Friday 8.30am - 6.15pm



**0485-0019-03**